

FULL-TIME PROSPECTUS 2018/19



Wirral Met College



CONTENTS

- 05 COLLEGE CAMPUSES
 - 06 WELCOME FROM THE PRINCIPAL
 - 07 INFORMATION FOR PARENTS
 - 08 QUALIFICATIONS EXPLAINED
 - 10 HOW MUCH WILL IT COST?
 - 12 WIRRAL MET – A GREAT PLACE TO STUDY
 - 14 SUPPORT FOR LEARNING
 - 16 ENGLISH FOR SPEAKERS OF OTHER LANGUAGES
-
- COLLEGE COURSES:**
- 17 ACCESS TO HIGHER EDUCATION (HE)
 - 18 ACCOUNTANCY
 - 20 ANIMAL CARE & HORTICULTURE
 - 22 ART, CREATIVE MEDIA & MUSIC
 - Art & Design
 - Creative Media inc Games Design
 - Music
 - 28 BUSINESS
 - 30 CHILDCARE & EARLY YEARS EDUCATION
 - 32 COMPUTING & IT
 - 34 CONSTRUCTION & THE BUILT ENVIRONMENT
 - Brickwork, Carpentry & Joinery, Electrical,
 - Painting, Design & Decoration, Plastering,
 - Plumbing & Gas, Professional Studies
 - 38 ENGINEERING & MOTOR VEHICLE STUDIES
 - Engineering
 - Motor Vehicle Studies
 - 42 HAIRDRESSING & BEAUTY THERAPY
 - Hairdressing
 - Beauty Therapy
 - 46 OUR ACADEMY SALONS
 - 48 HEALTH & SOCIAL CARE
 - 50 HOSPITALITY & CATERING
 - 52 LOGISTICS & WAREHOUSING
 - 54 PUBLIC & UNIFORMED SERVICES
 - 56 SKILLS FOR LIFE & WORK
 - Prep 4 Life
 - Prince's Trust Team
 - Progression into Further Education
 - 60 SCIENCE
 - 64 SPORT, FITNESS & OUTDOOR EDUCATION
 - 66 TRAVEL & TOURISM
-
- 68 HOW DO I APPLY?
 - 70 DID YOU KNOW ABOUT OUR HIGHER EDUCATION COURSES?



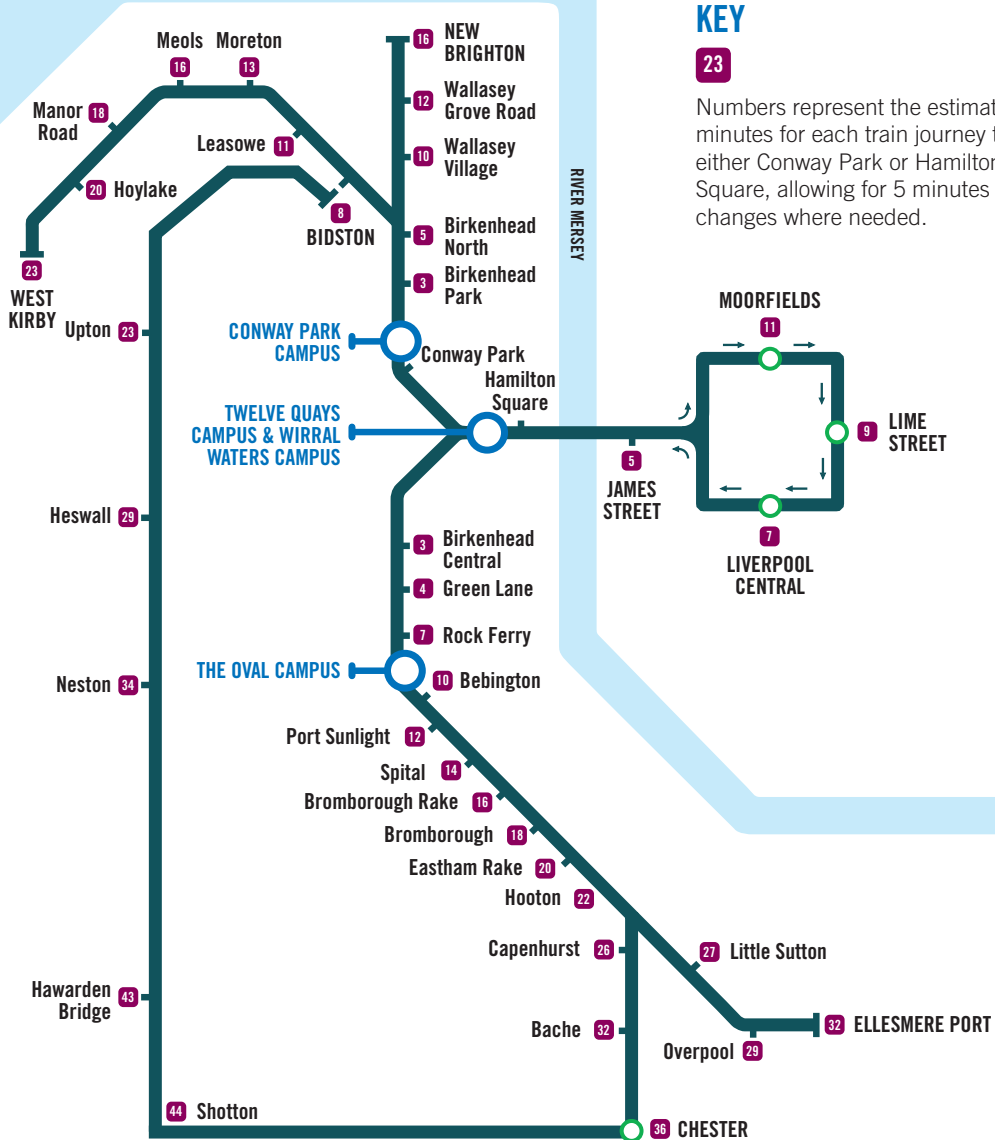
Wirral Met College



Check out our website for the dates of our Open Evenings. You can also call in to our Conway Park Campus Monday to Friday, and speak to one of our Student Advisers to find out more about our courses.

WIRRAL MET... YOUR LOCAL COLLEGE

(Source of information: merseyrail.org)



Visit wmc.ac.uk for maps, and travel directions.



CONWAY PARK CAMPUS

Europa Boulevard, Conway Park
Birkenhead, CH41 4NT

TEL: 0151 551 7777

*A short walk from Birkenhead bus station
opposite Conway Park train station*



TWELVE QUAYS CAMPUS

Morpeth Dock, Shore Road
Birkenhead, CH41 1AG

TEL: 0151 551 7777

*A few minutes from Woodside Ferry Terminal
and Birkenhead Hamilton Square train station*



THE OVAL CAMPUS

Old Chester Road, Bebington
CH63 7LH

TEL: 0151 551 7777

*A short walk from Bebington train station
next to The Oval Leisure Centre*



WIRRAL WATERS CAMPUS

Tower Road, Birkenhead
CH41 1AA

TEL: 0151 551 7777

*A few minutes walk from Seacombe Ferry
Terminal or Hamilton Square train station*



WELCOME FROM THE PRINCIPAL

IF YOU ARE READING THIS, YOU ARE LIKELY TO BE CONSIDERING THE NEXT IMPORTANT STEP IN CONTINUING YOUR EDUCATION AND TRAINING. AT WIRRAL MET COLLEGE, WE HELP THOUSANDS OF PEOPLE EVERY YEAR TO MAKE THIS LIFE CHANGING DECISION TO ACHIEVE THEIR AMBITIONS.

Our approach is to work with you to explore your dream career then create a personal learning plan to help you succeed. This prospectus will provide you with a glimpse of life at Wirral Met. With our recent investment of £21 million to create new, state of the art learning facilities, there has never been a better time to join us.

We work with over a thousand employers and employability skills and work experience are important components of your programme. If you are aged 16 to 18 your study programme is free but, whatever your age, we can provide you with guidance to access the range of bursary schemes and financial support to help you with your studies. We hold the matrix quality standard, which confirms that our advice is impartial and designed to meet your personal aspirations and circumstances.

Your personal learning journey will be designed specifically for you and it may lead you to university, an apprenticeship or a job. In addition to working towards your career goals, you will also be able to get involved in many other aspects of college life.

Our Students' Union helps to develop college strategy, organise college, community and charity events and we would be delighted if you choose to get involved.

If you are prepared to work hard and commit to developing your education and skills, then our team of over 500 staff are ready to help you succeed. Don't just take my word for it, come along to one of our open days or events and see for yourself!

Sue Higginson
Principal



INFORMATION FOR PARENTS

WE GREATLY VALUE THE CONTACT WE HAVE WITH THE PARENTS, GUARDIANS AND CARERS OF STUDENTS AGED 16-18.

Leaving school and starting college is a very important decision, and, as a parent or guardian, you will want to make sure your son or daughter has made the right choice.

We hope you will join us in supporting and encouraging your son/daughter to take their studies seriously, attend regularly, behave appropriately, be punctual and hand work in on time.

We will provide you with information on their progress, with regular opportunities to talk to staff about any issues or concerns you may have. Please call **0151 551 7777** if you do have any concerns.

IMPARTIAL ADVICE AND GUIDANCE

Wirral Met College has courses to suit your individual needs.

We hold the matrix standard, a national quality award, which demonstrates that we provide a high standard of information, advice and guidance to help you explore options and plan the right approach for your career.

Our students progress to jobs, apprenticeships, higher level study programmes and/or university.



QUALIFICATIONS EXPLAINED

WIRRAL MET COLLEGE HAS A WIDE VARIETY OF STUDY OPTIONS TO CHOOSE FROM:

1. STUDY PROGRAMMES

As a student at Wirral Met your study programme is tailor-made to meet your individual needs and career ambitions. Your study programme is made up of lots of different elements so that by the end of your time at college you will have gained work experience, valuable skills and a main qualification.

YOUR STUDY PROGRAMME WILL INCLUDE:

MAIN QUALIFICATION

You will spend most of your time at college studying one main qualification in your chosen subject area (e.g. NVQ Professional Cookery Diploma).

TUTORIAL

You will have a personal tutor to work with you to ensure you have a positive experience at college.

MATHS AND ENGLISH

If you have not yet achieved a grade 9-4 (formerly A*-C) in GCSE maths and/or English, you will continue to study these subjects at college. Depending on your grade, you will work towards a GCSE and/or Functional Skills qualification in English and/or maths.

NON-STUDY ACTIVITIES

You will have the opportunity to take part in a range of activities such as sports and trips, voluntary work, fund raising and charity work. When you enrol on a course at Wirral Met you will automatically become part of the Students' Union (unless you decide to opt out). This voluntary body is run by students, for students.

WORK EXPERIENCE & EMPLOYABILITY SKILLS

You will have the opportunity to undertake high quality, meaningful work experience and/or work related skills development

For information about study programmes, traineeships or apprenticeships, call our Student Advisers on 0151 551 7777, call in to see them at our Conway Park Campus or visit wmc.ac.uk for full details.

2. TRAINEESHIPS

Traineeships are designed to help young people gain the necessary work skills and experience to progress to an apprenticeship or job. They are a partnership between the employer and the College and involve high quality work experience, English, maths and a period of work preparation training such as developing interpersonal skills, CVs, job search and interview skills.

YOU WILL BE ELIGIBLE IF YOU:

- ⊕ are unemployed or in a job working less than 16 hours and have limited work experience
- ⊕ are aged 16-18 and qualified below level 3, or aged 19-24 and have not yet achieved a full level 3 qualification
- ⊕ you have a reasonable chance of being ready for employment or an apprenticeship within six months of starting your traineeship.

3. APPRENTICESHIPS

An apprenticeship is a job with training that develops your skills and knowledge, whilst you earn. We work with many employers who want to recruit apprentices in a wide variety of jobs and sectors. If this is for you, contact us to find out how you can become an apprentice.

APPRENTICESHIPS ARE AVAILABLE AT THE FOLLOWING LEVELS WITH A WIDE RANGE OF QUALIFICATIONS:

- ⊕ Level 2 (equivalent to 5 good GCSEs)
- ⊕ Level 3 (equivalent to 2 good A Levels)
- ⊕ Level 4 (which can include a Higher Education qualification e.g. Higher National Certificate)
- ⊕ Level 5 (which can include a Higher Education qualification e.g. Higher National Diploma)

If you want to become an apprentice you must apply for an apprenticeship job opportunity rather than apply to College. Visit wmc.ac.uk/apprenticeships for details of apprenticeships and current vacancies, visit gov.uk/apply-apprenticeship or call our Student Advisers for advice on 0151 551 7777.

HOW MUCH WILL IT COST?

MOST STUDENTS AGED 16-18 CAN ENROL ON A STUDY PROGRAMME FOR FREE, AS THEIR FEES ARE FUNDED BY THE EDUCATION AND SKILLS FUNDING AGENCY (ESFA).

If you are aged 19+ you may not have to pay course fees if you are claiming certain benefits, or studying your first full level 2 or 3 course (conditions apply). If you do pay fees, you may be entitled to financial help towards the payment of your fees, travel costs, childcare, residential fees or equipment required for your course (conditions apply). You may also be eligible for an Advanced Learner Loan.

Traineeships are also free and fully funded by the Education and Skills Funding Agency (ESFA) for 16-24 year olds.

For more information on fees and financial support please contact the Student Services team on **0151 551 7777** or visit **wmc.ac.uk** for details.

FINANCIAL SUPPORT

If you feel that your financial circumstances may stop you learning, there is a range of financial assistance available including:

- ⊕ **16-18 Bursary Fund***
- ⊕ **Free college meals for 16-18s***
- ⊕ **19+ Learner Support Fund***
- ⊕ **Advanced Learner Loan***
- ⊕ **Care to learn***
- ⊕ **20+ Childcare Support***
- ⊕ **Free transport***

*conditions apply

NEED HELP CHOOSING YOUR COURSE?

If you need help finding the right course, or you need more information, please call **0151 551 7777**, visit **wmc.ac.uk**, or call in to our Conway Park Campus and speak to one of our Student Advisers.

Wirral Met College's Information, Advice and Guidance Service holds the national matrix quality award, which means we are committed to giving you impartial advice and guidance. Our professionally qualified Student Advisers offer a friendly, confidential and welcoming service to help you make the right choices for your career.

Our Student Advisers are available by phone between 9:00am-4.30pm Monday-Friday. Alternatively, drop in to our Conway Park Campus Monday-Friday, 10:00am to 4:00pm (all year round), with late opening times on Wednesdays and Thursdays (term time only) until 6.30pm.

WHICH LEVEL WILL I START AT?

WIRRAL MET COLLEGE HAS A PLACE FOR EVERY STUDENT, REGARDLESS OF YOUR STARTING POINT AND CHOSEN CAREER PATH. AS A GUIDE, THE LIKELY STARTING POINTS ARE SET OUT BELOW.

| CURRENT QUALIFICATIONS YOU HAVE: | LIKELY STARTING POINT AT COLLEGE: |
|---|--|
| NO GCSEs | Entry Level 1, 2, 3, Traineeships, Apprenticeships or Progression into Further Education courses |
| JUST A FEW GCSEs AT GRADE 3/2 (FORMERLY GRADE E) | Level 1 study programmes <ul style="list-style-type: none"> NVQ Level 1 BTEC Certificate/Award Traineeships, Apprenticeships or Progression into Further Education or Prince's Trust programmes |
| 3 GCSEs AT GRADES 9-3 (FORMERLY GRADES A*-D) AND ABOVE | Level 2 study programmes /apprenticeships <ul style="list-style-type: none"> NVQ Level 2 BTEC Certificate/Diploma Traineeship Level 2 Apprenticeship Pre-Access (students aged 19+) |
| 4-5 GCSEs AT GRADES 9-4 (FORMERLY GRADES A*-C), LEVEL 2 (INTERMEDIATE) APPRENTICESHIP | Level 3 study programmes /apprenticeships <ul style="list-style-type: none"> NVQ Level 3 BTEC Certificate/Diploma Level 3 Apprenticeship Access to Higher Education (students aged 19+) |
| A LEVEL, AS LEVEL, BTEC EXTENDED DIPLOMA, NVQ LEVEL 3, LEVEL 3 (ADVANCED) APPRENTICESHIP | Level 4, 5 & 6 courses /apprenticeships <ul style="list-style-type: none"> NVQ Level 4 Levels 4, 5, 6 (Higher) National Certificate/Diploma (HNC/D) Level 4/5 Higher Apprenticeship Foundation Degree (FD) Bachelor Degree (BA/BSc) Professional Qualifications |

This is only a guide to the different qualifications at each level and we may offer other qualifications to suit your needs. To discuss your options in detail, please contact our Student Advisers. You can also take a look at the National Careers Service website for careers information – visit www.nationalcareersservice.direct.gov.uk

WIRRAL MET COLLEGE IS A GREAT PLACE TO STUDY!

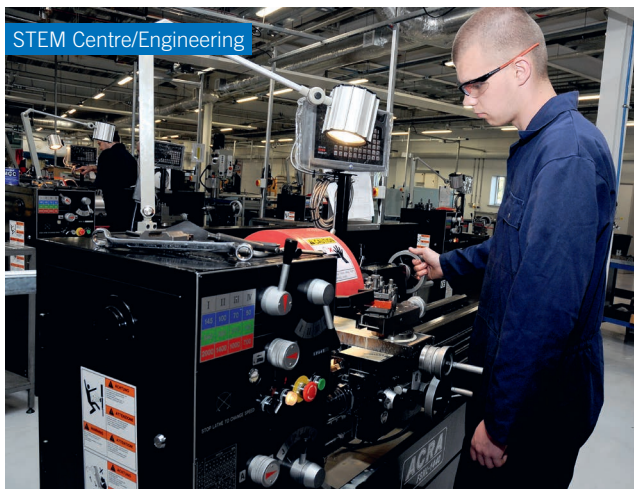
Take part in trips and social activities organised by the Students' Union:

- ⊕ **Become a Student Volunteer**
- ⊕ **Join the Students' Union and become a Course Rep**
- ⊕ **Organise charity fund raising events**
- ⊕ **Take part in trips and sporting events**

Visit the Students' Union page on our website for more details.

Don't forget to get your NUS Extra student discount card (or NUS Extra Apprentice card) from the Students' Union.

WIRRAL MET OFFERS EXCELLENT FACILITIES



STEM Centre/IT



Gym - Oval Campus



Hair & Beauty Salons



Training Kitchens & Restaurant



Construction Centre



STEM Centre/Science



SUPPORT FOR LEARNING

We want you to enjoy your time at college and we are here to help. If you need support, just let us know!

PASTORAL SUPPORT MENTORS SUPPORT YOU WITH:

- ⊕ Personal issues
- ⊕ Problems relating to finance
- ⊕ Childcare
- ⊕ Accommodation
- ⊕ Time management
- ⊕ Study support to help you keep up with your work

For more details, speak to the Student Services team - **0151 551 7777**



ADDITIONAL LEARNING SUPPORT (ALS)

THE ADDITIONAL LEARNING SUPPORT TEAM ENABLES STUDENTS TO BE AS SUCCESSFUL AS POSSIBLE. WE HAVE A TEAM OF OVER 60 HIGHLY TRAINED AND QUALIFIED STAFF, INCLUDING SPECIALIST TUTORS, COMMUNICATION SUPPORT WORKERS AND LEARNING SUPPORT ASSISTANTS.

We work with students across all subject areas and levels. We provide support for a wide range of needs, including:

- ⊕ Dyslexia/Dyspraxia
- ⊕ Moderate/Complex Learning Difficulties
- ⊕ Autism Spectrum, Asperger's Syndrome
- ⊕ Physical Difficulties
- ⊕ ADHD, ADD
- ⊕ Mental Health and Well-being
- ⊕ Being Blind or Partially Sighted
- ⊕ Being D/deaf or Hard of Hearing

You will receive a confidential assessment from a qualified, specialist tutor. They can assess your need, and work with you to decide what kind of support will help you. This may simply be the loan of some specialist equipment or software. It may be some additional teaching, or perhaps one-to-one support in the classroom or around the college.

CONTACT US!

If you would like to speak to someone about your needs, in confidence, please call **0151 551 7777**.



ENGLISH FOR SPEAKERS OF OTHER LANGUAGES

IF ENGLISH IS NOT YOUR FIRST LANGUAGE, THESE COURSES WILL DEVELOP YOUR READING, WRITING AND LISTENING SKILLS IN ENGLISH.

Join an English for Speakers of Other Languages (ESOL) study programme:

| COURSE | LEVEL | CODE |
|----------------------------------|---------|------|
| ESOL BEGINNERS | Entry 1 | X001 |
| ESOL SKILLS FOR LIFE CERTIFICATE | Entry 2 | X002 |
| ESOL SKILLS FOR LIFE CERTIFICATE | Entry 3 | X003 |
| ESOL SKILLS FOR LIFE CERTIFICATE | 1 | X005 |
| ESOL SKILLS FOR LIFE CERTIFICATE | 2 | X006 |

For further information, contact us on 0151 551 7777 or visit wmc.ac.uk

ARE YOU AN INTERNATIONAL STUDENT?

Contact us on **0151 551 7777**, or visit our international page at wmc.ac.uk, for more details.



ACCESS TO HIGHER EDUCATION (HE)

ARE YOU AGED 19+, NOT QUITE READY, OR DO NOT HAVE THE GRADES TO PROGRESS TO UNIVERSITY LEVEL OR HIGHER EDUCATION (HE) COURSES? JOIN AN ACCESS OR PRE-ACCESS TO HE COURSE.

Access courses are designed to help adults return to learning and progress to change to higher education. These courses will prepare you to study at degree level and lead to careers in:

- ⊕ Art & Design
- ⊕ Business
- ⊕ Computing
- ⊕ Health (Midwifery)
- ⊕ Health (Nursing)
- ⊕ Humanities
- ⊕ Performing Arts
- ⊕ Primary Education
- ⊕ Psychology
- ⊕ Science
 - Biomedical Science
 - Medical Science
 - Science
- ⊕ Sociology, Criminology & Social Work



For further information, call our Student Advisers on **0151 551 7777** or visit the Access to HE page at wmc.ac.uk

Wirral Met College offers a wide range of university level courses in partnership with prestigious universities including the University of Chester, University of Liverpool and University of Central Lancashire. Visit wmc.ac.uk/higher-education, or call **0151 551 7777** to request your copy of the higher education prospectus.



ACCOUNTANCY

ASSOCIATION OF ACCOUNTING TECHNICIANS (AAT) QUALIFICATIONS ARE INTERNATIONALLY RECOGNISED. THEY ARE BASED ON PRACTICAL, REAL-WORLD ACCOUNTING KNOWLEDGE AND YOU WILL LEARN ESSENTIAL BUSINESS AND FINANCE SKILLS THAT YOU CAN PUT INTO USE FROM DAY ONE.

Accountancy study programmes delivered at our **Twelve Quays Campus** include:

| COURSE | LEVEL | CODE |
|--|-------|------|
| AAT Foundation Certificate in Accounting (fast-track) | 2 | D054 |
| AAT Advanced Diploma in Accounting (fast-track) | 3 | D063 |

Your study programme is tailored to your individual needs and usually lasts 2 years. See page 8 for details. Levels 2, 3 and 4 apprenticeships in Accounting are also available – visit wmc.ac.uk/apprenticeships for full details.

WHERE NEXT?

You can apply for an apprenticeship or job in accounting, or continue into Higher Education and study on a level 4 course.

If you have decided which course you want to study, apply online at wmc.ac.uk. If not, get in touch with our Student Advisers who will help you.

WHERE ARE THEY NOW?

Henry Brooke-Brunsdon has just completed a level 3 AAT course at Wirral Met College. Henry, in addition to studying, has been working with his family who run their own business, a home and lifestyle shop selling contemporary gifts sourced from local artists. Henry has been helping his family with their accounts and now he has completed his time at college he will be taking over the business in the near future.





INDUSTRY OPPORTUNITIES

CAREERS INCLUDE:

**ACCOUNTANT, BOOK-KEEPER,
FINANCE ASSISTANT, SELF EMPLOYMENT**



**YOUR EARNING
POTENTIAL:**

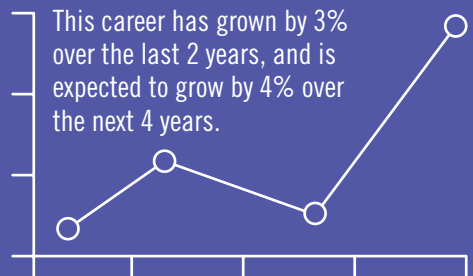


Chartered and Certified Accountants normally earn...

£38,786 PER YEAR

Finance Assistants could earn between...

£15-33,000 PER YEAR



Sources: nationalcareersservice.direct.gov.uk | wmc.emsicareercoach.co.uk

ANIMAL CARE & HORTICULTURE

OUR ANIMAL CARE SUITE AT WIRRAL MET COLLEGE'S TWELVE QUAYS CAMPUS IS HOME TO A NUMBER OF ANIMALS, INCLUDING DWARF RABBITS, GUINEA PIGS, DWARF AND SYRIAN HAMSTERS, MICE, BUDGIES, TERRAPINS, SNAKES, A PYTHON, LIZARDS, GECKOS, A HORNED FROG, FIRE BELLIED TOADS, STICK INSECTS AND MORE. YOU WILL DEVELOP PRACTICAL SKILLS WORKING ON PROJECTS IN THE LOCAL COMMUNITY WITH A RANGE OF ANIMALS.

Study programmes delivered at our **Twelve Quays Campus** include:

| COURSE | LEVEL | CODE |
|--|-------|------|
| ANIMAL CARE AND HORTICULTURE DIPLOMA | Entry | S207 |
| BTEC ANIMAL CARE AND HORTICULTURE DIPLOMA | 1 | S119 |
| BTEC ANIMAL CARE FIRST DIPLOMA | 2 | S102 |
| BTEC ANIMAL MANAGEMENT SUBSIDIARY DIPLOMA | 3 | S133 |
| BTEC ANIMAL MANAGEMENT 90 CREDIT DIPLOMA | 3 | S122 |
| BTEC ANIMAL MANAGEMENT EXTENDED DIPLOMA | 3 | S179 |

Your study programme is tailored to your individual needs and usually lasts for 2 years. See page 8 for details. Level 2/intermediate and level 3/advanced apprenticeships are available in Horticulture – visit wmc.ac.uk/apprenticeships for full details.

WHERE NEXT?

Students progress into jobs once they have completed their full-time study programmes.

If you have decided which course you want to study, apply online at wmc.ac.uk. If not, get in touch with our Student Advisers who will help you.

WHERE ARE THEY NOW?

Louise Millington successfully completed the BTEC Animal Management level 3 Extended Diploma and has gained a full-time position as an Animal Care Technician at Wirral Met College. This is a dream job for Louise and she was extremely excited to secure this role immediately after passing her diploma.





INDUSTRY OPPORTUNITIES

CAREERS INCLUDE:

**ANIMAL WELFARE WORKER,
DOG GROOMER, VETERINARY
NURSE, ZOO KEEPER**



**YOUR EARNING
POTENTIAL:**



Qualified Veterinary Nurses can earn between...

£18-24,000 PER YEAR

Animal Care Services Occupations can earn from...

£12-20,000 PER YEAR



Sources: nationalcareersservice.direct.gov.uk | wmc.emsicareercoach.co.uk

WIRRAL MET'S ART SCHOOL HAS A REPUTATION FOR QUALITY AND CREATIVITY. EXCELLENT FACILITIES ARE COMPLEMENTED BY A TEAM OF TALENTED STAFF, WHO ARE DEDICATED TO HELPING YOU EXPLORE AND HARNESS YOUR CREATIVE TALENT.

Study programmes delivered at our **Twelve Quays Campus** include:

| COURSE | LEVEL | CODE |
|--|-------|------|
| UAL Art and Design Diploma | 1 | A062 |
| UAL Art and Design Diploma | 2 | A063 |
| UAL Art and Design Extended Diploma | 3 | A064 |
| UAL Art and Design Diploma | 3 | A072 |
| UAL Art and Design Pre Degree Foundation Diploma | 3 | A016 |

All our courses are validated by the prestigious University of Arts London (UAL). Your study programme is tailored to your individual needs and usually lasts for 2 years. See page 8 for details.

WHERE NEXT?

You can progress into employment or continue your studies at a higher level and do a degree course such as the BA (Hons) Fine Art or the BA (Hons) Illustration with Animation at Wirral Met College. These courses are validated by the University of Chester.

Working in Partnership with



University of
Chester

If you have decided which course you want to study, apply online at wmc.ac.uk. If not, get in touch with our Student Advisers who will help you.

WHERE ARE THEY NOW?

Rory Tate studied level 3 Foundation Diploma Art and Design. Having received the student of the year award for 2017 Rory has decided to extend his skills and branch out into digital design on the Illustration with Animation BA (Hons) Degree at Wirral Met. Rory will use this to to embark on a career in gaming design.





INDUSTRY OPPORTUNITIES

CAREERS INCLUDE:

**ARTIST, GRAPHIC DESIGNER,
INTERIOR DESIGNER**



**YOUR EARNING
POTENTIAL:**



Graphic Designers' salaries start at around...

£19-40,000 PER YEAR

Experienced Interior Designers can earn around...

£21-48,000 PER YEAR



Sources: nationalcareersservice.direct.gov.uk | wmc.emsicareercoach.co.uk

IF YOU WOULD LIKE A CAREER IN MEDIA, WORKING IN RADIO, TELEVISION, FILM OR WEB-BASED MEDIA, THIS IS THE STUDY PROGRAMME FOR YOU. FILM MAKING, SCRIPT WRITING, PHOTOGRAPHY AND DEVELOPING WEB-BASED MEDIA ARE JUST SOME OF THE THINGS THAT OUR SPECIALIST TUTORS WILL GUIDE YOU THROUGH.

Study programmes delivered at our **Twelve Quays Campus** include:

| COURSE | LEVEL | CODE |
|---|-------|------|
| BTEC Creative Media Production Diploma | 1 & 2 | P075 |
| BTEC Diploma in Games Design - NEW FOR 2018 (subject to validation) | 2 | |
| BTEC Creative Media Production 90 Credit Diploma | 3 | P067 |
| BTEC Creative Media Production Extended Diploma | 3 | P030 |
| BTEC Extended Diploma in Games Design - NEW FOR 2018 (subject to validation) | 3 | |

Your study programme is tailored to your individual needs and usually lasts for 2 years. See page 8 for details.

WHERE NEXT?

Many students progress to higher education courses including degrees and Higher National Certificates (HNC) or Higher National Diplomas (HND) such as the HNC/D in Photography at Wirral Met College. Others move into jobs in radio, television, film or marketing and/or self-employment.

If you have decided which course you want to study, apply online at wmc.ac.uk. If not, get in touch with our Student Advisers who will help you.

WHERE ARE THEY NOW?

Meet **Michael Munn** who studied Creative Media Production at Wirral Met College. Michael's journey led him to full-time employment as a Youth Marketing Executive with 'Fourteen19', running the Merseyside office. He progressed to a Digital Communications Officer role at 'Magenta Living', where he now manages a variety of digital channels from social media campaigns, videos, website and intranet communications.





INDUSTRY OPPORTUNITIES

CAREERS INCLUDE:

**COMPUTER GAMES DEVELOPERS, EDITOR,
PHOTOGRAPHER, RADIO PRODUCER, WEB DESIGNER**



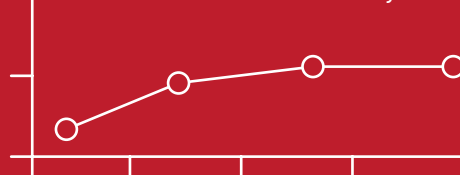
YOUR EARNING POTENTIAL:



Starting salaries for Photographers,
Audio-visual and Broadcasting
Equipment Operators are usually around... **£24,863 PER YEAR**

Experienced and skilled Programmers
or Software Development
Professionals can earn between... **£22-57,000 PER YEAR**

This career has remained the same
over the last 2 years, and is expected to
remain the same over the next 4 years.



Sources: nationalcareersservice.direct.gov.uk | wmc.emsicareercoach.co.uk

THE MODERN FACILITIES AT OUR TWELVE QUAYS CAMPUS INCLUDE MUSIC AND RECORDING STUDIOS. YOU WILL DEVELOP YOUR OWN UNIQUE STYLE AND CREATIVE TALENTS, WHILST DEVELOPING YOUR KNOWLEDGE OF MUSIC.

Study programmes delivered at our **Twelve Quays Campus** include:

| COURSE | LEVEL | CODE |
|--|-------|------|
| UAL Music, Performing & Production Arts Diploma | 1 | P079 |
| UAL Music First Diploma | 2 | P010 |
| UAL Music Extended Diploma | 3 | P015 |
| UAL Music/Music Technology Diploma | 3 | P065 |

Your study programme is tailored to your individual needs and usually last for 2 years. See page 8 for details.

WHERE NEXT?

Many students progress into jobs and/or self-employment once they have completed their full-time study programmes. Some level 3 students progress onto Higher Education courses at Wirral Met College, or they will go to university to study a degree.

If you have decided which course you want to study, apply online at wmc.ac.uk. If not, get in touch with our Student Advisers who will help you.

WHERE ARE THEY NOW?

Jack Dunne received a Personal Achievement award for 2017 recognising that he does not let his additional learning needs get in the way of his aspirations. He has become an independent student in the field of music. Jack plays keyboard and piano and has now progressed from level 2 to level 3.





INDUSTRY OPPORTUNITIES

CAREERS INCLUDE:

**SOUND ENGINEER, MUSICIAN,
MUSIC TEACHER, DJ, ENTERTAINER**



**YOUR EARNING
POTENTIAL:**



Sound engineer salaries start at around...

£15,000 PER YEAR

With experience this can rise up to...

£40,000 PER YEAR



Sources: nationalcareersservice.direct.gov.uk | wmc.emsicareercoach.co.uk

BUSINESS

EVERY INDUSTRY REQUIRES BUSINESS EXPERTISE TO MAKE IT SUCCESSFUL. EXCELLENT BUSINESS AND ORGANISATION SKILLS ARE INVALUABLE, WHEREVER YOU WORK. WITH THE SUPPORT OF OUR BUSINESS TUTORS, YOU WILL DEVELOP YOUR BUSINESS ACUMEN, AND YOU CAN PROGRESS ONTO LEADERSHIP AND MANAGEMENT OPPORTUNITIES.

Study programmes delivered at our **Twelve Quays Campus** include:

| COURSE | LEVEL | CODE |
|--|-------|------|
| BTEC National Foundation Diploma in Business Enterprise | 3 | B153 |

Your study programme is tailored to your individual needs and usually lasts for 2 years. See page 8 for details. We have a variety of Business Apprenticeships available, at levels 2, 3, 4 and 5 – visit wmc.ac.uk/apprenticeships for full details.

WHERE NEXT?

Students often progress into a level 3 study programme, move onto an apprenticeship or gain jobs working in business and administration. If you already have a level 3 qualification, you may wish to progress onto a university level course.

If you have decided which course you want to study, apply online at wmc.ac.uk. If not, get in touch with our Student Advisers who will help you.

WHERE ARE THEY NOW?

Lauren Greenwood studied a level 2/intermediate Business and Administration apprenticeship then progressed onto a level 3/advanced level at Wirral Met. She is now working full-time as an Administrator.





INDUSTRY OPPORTUNITIES

CAREERS INCLUDE:

**ADMINISTRATOR, BUSINESS ANALYST,
BUSINESS CONSULTANT, HUMAN RESOURCES
OFFICER, MARKETING OFFICER, SALES EXECUTIVE**



YOUR EARNING POTENTIAL:

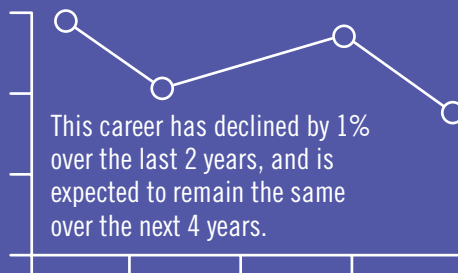


Salaries for Human Resource Officers are between...

£18-39,000 PER YEAR

Marketing Officers can earn between...

£15-42,000 PER YEAR



Sources: nationalcareersservice.direct.gov.uk | wmc.emsicareercoach.co.uk

CHILDCARE & EARLY YEARS EDUCATION

PREPARING FOR A CAREER DEDICATED TO THE CARE AND DEVELOPMENT OF CHILDREN IS VERY REWARDING. YOU WILL LEARN THE THEORETICAL SIDE OF CHILD DEVELOPMENT AND EARLY YEARS EDUCATION, WHILST DEVELOPING A RANGE OF PRACTICAL SKILLS AND EXPERIENCE.

Study programmes delivered at our **Twelve Quays Campus** include:

| COURSE | LEVEL | CODE |
|--|-------|------|
| NCFE Preparation for Healthcare in Early Years | 1 | N102 |
| CACHE Introducing Caring for Children & Young People | 2 | N092 |
| CACHE Introduction to Early Years Education and Care Certificate | 2 | N088 |
| CACHE Certificate in Childcare and Education (Early Years Educator) | 3 | N098 |

Your study programme is tailored to your individual needs and usually lasts 2 years. See page 8 for details. We have a variety of apprenticeships available at levels 2 and 3 – visit wmc.ac.uk/apprenticeships for full details.

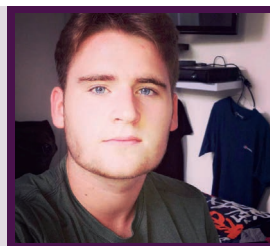
WHERE NEXT?

Many students progress into jobs or an apprenticeship after completing their level 1 or 2 study programmes. Students completing their level 3 award can also progress on to study at degree level.

If you have decided which course you want to study, apply online at wmc.ac.uk. If not, get in touch with our Student Advisers who will help you.

WHERE ARE THEY NOW?

Louis Muse progressed from level 1 to level 2 Early Years Education and Care. He won a personal achievement award for his dedication and hard work throughout the course. With excellent attendance Louis has progressed to a level 3 apprenticeship as a nursery worker in a local day nursery.





INDUSTRY OPPORTUNITIES

CAREERS INCLUDE:

**CHILD-MINDER, CLASSROOM ASSISTANT,
NANNY, NURSERY WORKER, TEACHER**



**YOUR EARNING
POTENTIAL:**

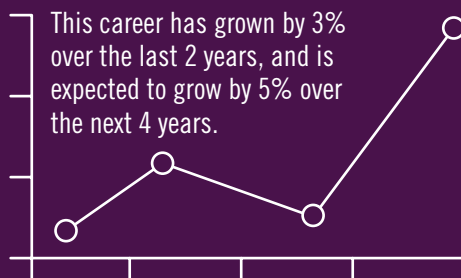


Qualified and experienced Nursery Workers can earn between...

£13-22,000 PER YEAR

Classroom Assistants can earn between...

£15-24,000 PER YEAR



Sources: nationalcareersservice.direct.gov.uk | wmc.emsicareercoach.co.uk

COMPUTING & IT

YOU WILL STUDY IN WIRRAL MET'S SCIENCE, TECHNOLOGY, ENGINEERING AND MATHS (STEM) CENTRE AND HAVE ACCESS TO THE LATEST TECHNOLOGY INCLUDING DRONES, SOFTWARE, IT FACILITIES AND VIRTUAL LEARNING TOOLS. THIS IS A VERY FAST MOVING AND EXCITING AREA TO BE INVOLVED IN.

Study programmes delivered at our **Twelve Quays Campus** include:

| COURSE | LEVEL | CODE |
|--|-------|------|
| Digital and Computing Technologies – Introduction | 1 | C054 |
| Digital and Computing Technologies – Intermediate | 2 | C053 |
| Digital and Computing Technologies Extended Certificate | 3 | C096 |
| Digital and Computing Technologies Foundation Diploma | 3 | C097 |

Your study programme is tailored to your individual needs and usually lasts 2 years. See page 8 for details. Apprenticeships at levels 2 and 3 are also available – visit wmc.ac.uk/apprenticeships for full details.

WHERE NEXT?

Level 3 students progress into jobs or Higher Education; you can also study towards the Foundation Degree in Computer Science or the BA (Hons) Illustration with Animation degree at Wirral Met College. These courses are validated by the University of Chester.

Working in Partnership with



University of
Chester

If you have decided which course you want to study, apply online at wmc.ac.uk. If not, get in touch with our Student Advisers who will help you.

WHERE ARE THEY NOW?

Joe Yates is studying a Foundation Degree in Computer Science at Wirral Met. Joe worked so hard on a work experience placement at local company, e-trackit, as part of his level 2 study programme, that the company employed him!





INDUSTRY OPPORTUNITIES

CAREERS INCLUDE:

NETWORK ENGINEERS, SOFTWARE DEVELOPERS, MULTIMEDIA DEVELOPERS



YOUR EARNING POTENTIAL:



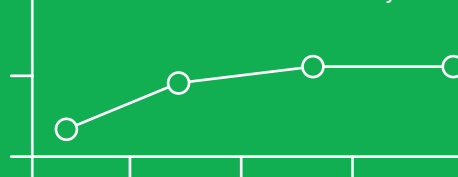
New software developers generally start around...

£22,406 PER YEAR

Highly experienced software developers can earn as much as...

£57,252 PER YEAR

This career has remained the same over the last 2 years, and is expected to remain the same over the next 4 years.



Sources: nationalcareersservice.direct.gov.uk | wmc.emsicareercoach.co.uk

CONSTRUCTION & THE BUILT ENVIRONMENT

CONSTRUCTION IS USED TO DESCRIBE A VARIETY OF TRADES AND CAREER CHOICES, WHICH CAN LEAD TO SENIOR TECHNICAL AND MANAGEMENT POSITIONS.

Our new £11m Wirral Waters Campus in Birkenhead is dedicated to the Construction industry. You will benefit from learning practical skills in our outstanding facilities, whilst also developing your theoretical knowledge and understanding, supported by our tutors who have substantial commercial experience and professional expertise.

Study programmes delivered at our **Wirral Waters Campus** include:

CONSTRUCTION & THE BUILT ENVIRONMENT – ENTRY LEVEL

| COURSE | LEVEL | CODE |
|-------------------------------------|-------|------|
| Introduction to Construction Crafts | Entry | R243 |

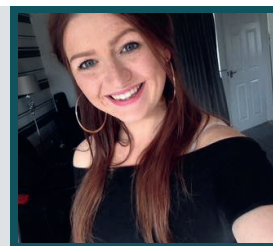
BRICKWORK

| COURSE | LEVEL | CODE |
|-------------------------------------|-------|------|
| Introduction to Construction Crafts | Entry | R243 |
| Bricklaying Diploma | 1 | R076 |
| Bricklaying Diploma | 2 | R077 |
| Bricklaying Diploma | 3 | R078 |

Level 2 and level 3 apprenticeships in Trowel Occupations (Brickwork) are also available – visit wmc.ac.uk/apprenticeships for full details.

WHERE ARE THEY NOW?

Since gaining her level 2 and 3 qualifications in Painting and Decorating, **Jane Gray** has been busy setting up her own painting, design and decorating business, 'Shades by Gray'. Based in Prenton, Jane's business is now in its third year and she is delighted with the path she has taken. Her business is going from strength to strength.



CARPENTRY & JOINERY

| COURSE | LEVEL | CODE |
|-------------------------------------|-------|------|
| Introduction to Construction Crafts | Entry | R243 |
| Carpentry and Joinery Diploma | 1 | R079 |
| Site Carpentry Diploma | 2 | R080 |
| Site Carpentry Diploma | 3 | R081 |

Level 2 and level 3 Advanced apprenticeships in Wood Occupations are also available – visit wmc.ac.uk/apprenticeships for full details.

ELECTRICAL

| COURSE | LEVEL | CODE |
|---|-------|------|
| Electrical Installation Studies Diploma | 1 | R063 |
| Electrical Installation Studies Diploma | 2 | R212 |
| Electrical Installation Studies Diploma | 3 | R213 |

Level 2 and level 3 apprenticeships in Electrical Installation are also available – visit wmc.ac.uk/apprenticeships for full details.

PAINTING, DESIGN & DECORATION

| COURSE | LEVEL | CODE |
|-------------------------------------|-------|------|
| Introduction to Construction Crafts | Entry | R243 |
| Painting and Decorating Diploma | 1 | R073 |
| Painting and Decorating Diploma | 2 | R074 |

Level 2 and level 3 apprenticeships in Decorative Finishing are also available – visit wmc.ac.uk/apprenticeships for full details.

PLASTERING

| COURSE | LEVEL | CODE |
|-------------------------------------|-------|------|
| Introduction to Construction Crafts | Entry | R243 |
| Plastering Diploma | 1 | R070 |
| Plastering Diploma | 2 | R105 |
| Plastering Diploma | 3 | R072 |

Level 2 and level 3 apprenticeships in Plastering are also available – visit wmc.ac.uk/apprenticeships for full details.

PLUMBING

| COURSE | LEVEL | CODE |
|--------------------------|-------|------|
| Plumbing Studies Diploma | 1 | R161 |
| Plumbing Studies Diploma | 2 | R194 |
| Plumbing Studies Diploma | 3 | R224 |

Level 2 and level 3 apprenticeships in Plumbing & Heating are also available – visit wmc.ac.uk/apprenticeships for full details.

CONSTRUCTION – PROFESSIONAL STUDIES

| COURSE | LEVEL | CODE |
|---|-------|------|
| BTEC Construction and the Built Environment Diploma - 90 credit | 3 | R251 |
| BTEC Construction and the Built Environment Extended Diploma | 3 | R252 |

Level 2 apprenticeships in Construction Operations and level 3 apprenticeships in Technical Construction are also available – visit wmc.ac.uk/apprenticeships for full details.

WHERE NEXT?

Many students progress into jobs and/or apprenticeships once they have completed their study programmes. Level 3 students often progress on to Higher Education courses such as the BTEC Higher National Certificate (HNC) or Higher National Diploma (HND) programmes in Construction & the Built Environment, at Wirral Met College. Many people decide to become self-employed and set up their own business once they have gained the skills and experience in the trade.

If you have decided which course you want to study, apply online at wmc.ac.uk. If not, get in touch with our Student Advisers who will help you.



INDUSTRY OPPORTUNITIES

CAREERS INCLUDE:

ARCHITECT, BRICKLAYER, CARPENTER/JOINER, CIVIL ENGINEER, ELECTRICIAN, HEATING/VENTILATION TECHNICIAN, PAINTER/DECORATOR, PLASTERER, PLUMBER, SELF EMPLOYMENT



YOUR EARNING POTENTIAL:



Newly-qualified Electricians may earn...

£18,798 PER YEAR

With experience, this can rise to...

£42,062 PER YEAR



Sources: nationalcareersservice.direct.gov.uk | wmc.emsicareercoach.co.uk

YOU WILL DEVELOP YOUR SKILLS IN OUR SCIENCE, TECHNOLOGY, ENGINEERING AND MATHS (STEM) CENTRE. THE ENGINEERING WORKSHOPS CONTAIN A RANGE OF SPECIALIST MACHINERY AND EQUIPMENT INCLUDING PROGRAMMABLE LOGIC CONTROLLER (PLC) AND COMPUTER NUMERICAL CONTROL (CNC) SYSTEMS TO SUPPORT ADVANCED MANUFACTURING & CNC MACHINERY PROCESSES.

Study programmes delivered at our **Twelve Quays Campus** include:

| COURSE | LEVEL | CODE |
|--|-------|------|
| NVQ Performing Engineering Operations Certificate | 1 | E011 |
| BTEC First Award in Engineering | 1 & 2 | E160 |
| NVQ Performing Engineering Operations Diploma | 2 | E013 |
| BTEC Engineering 90 credit Diploma | 3 | E157 |
| BTEC Engineering National Extended Diploma | 3 | E158 |

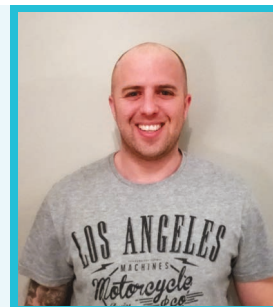
We have a variety of Engineering apprenticeships available at levels 2, 3 and 4 – visit wmc.ac.uk/apprenticeships for full details. Your study programme is tailored to your individual needs and usually lasts 2 years. See page 8 for details. Apply online at wmc.ac.uk

WHERE NEXT?

Many students progress into jobs and/or apprenticeships once they have completed their full-time studies. Level 3 students often progress into Higher Education courses such as the BTEC Higher National Certificate (HNC) or Higher National Diploma (HND) courses in Engineering, offered at Wirral Met College, or to university.

WHERE ARE THEY NOW?

Lee Hardman studied BTEC National Certificate in Operations and Maintenance level 3 and BTEC HNC in Operations Engineering level 4 at Wirral Met College. Lee said, “The tutors at Wirral Met College are simply phenomenal; they have an ability to empower students through their passion to teach. I have benefited from the course by being able to develop my original role as Maintenance Team Leader and progressing to Operations Director of the company.”





INDUSTRY OPPORTUNITIES

CAREERS INCLUDE:
**ENGINEERING TECHNICIAN,
PROFESSIONAL ENGINEER**



**YOUR EARNING
POTENTIAL:**



Highly experienced Engineers can earn as much as...
£54,230 PER YEAR



Sources: nationalcareersservice.direct.gov.uk | wmc.emsicareercoach.co.uk

MOTOR VEHICLE STUDIES

EXCELLENT LINKS WITH LARGE AND SMALL EMPLOYERS HAVE ENABLED US TO DEVELOP A FLEXIBLE RANGE OF QUALIFICATIONS TO EQUIP YOU WITH THE SKILLS AND KNOWLEDGE YOU NEED TO SUCCEED IN THIS INDUSTRY.

Study programmes delivered at our **Twelve Quays Campus** include:

| COURSE | LEVEL | CODE |
|--|-------|------|
| Introduction to Vehicle Technology Diploma | Entry | E127 |
| Motor Vehicle Maintenance and Repair Diploma | 1 | E132 |
| Motor Vehicle Engineering (Brakes, Tyres and Exhausts) | 2 | E022 |
| Light Vehicle Maintenance and Repair Principles Diploma | 2 | E024 |
| Light Vehicle Maintenance and Repair Principles Diploma | 3 | E023 |

Level 2 and level 3 apprenticeships in Vehicle Maintenance and Repair (Light Vehicle) are also available – visit wmc.ac.uk/apprenticeships for full details. Your study programme is tailored to your individual needs and usually lasts 2 years. See page 8 for details.

WHERE NEXT?

Many students progress into jobs and/or apprenticeships once they have completed their study programmes. There is a wide range of jobs available in this sector.

If you have decided which course you want to study, apply online at wmc.ac.uk. If not, get in touch with our Student Advisers who will help you.

WHERE ARE THEY NOW?

Stephen Bentley studied an advanced level 3 apprenticeship in Mechanical Manufacturing Engineering at Wirral Met College. Stephen is now a Computer Numerical Control Machinist at McLaren Automotive. Stephen explained, “I chose to complete an engineering apprenticeship as it allowed me to progress in my workplace to the machine shop, which enabled me to work as a CNC machinist.”





INDUSTRY OPPORTUNITIES

CAREERS INCLUDE:

MOTORSPORT TECHNICIAN, MOTOR VEHICLE TECHNICIAN, MECHANIC, MOTOR VEHICLE BREAKDOWN TECHNICIAN, SELF EMPLOYMENT



YOUR EARNING POTENTIAL:



Motor Vehicle Technicians can earn between...

£16-33,000 PER YEAR

With experience, this can rise to between...

£25-40,000 PER YEAR

This career has grown by 1% over the last 2 years, and is expected to decline by 1% over the next 4 years.



Sources: nationalcareersservice.direct.gov.uk | wmc.emsicareercoach.co.uk

ENROL WITH WIRRAL MET COLLEGE AND YOU WILL TRAIN IN OUR FULLY EQUIPPED HAIRDRESSING SALONS AT THE CONWAY PARK CAMPUS. OUR TEAM OF TUTORS ARE EXPERIENCED HAIRDRESSING PROFESSIONALS AND SPECIALIST TEACHERS WHO WILL HELP YOU DEVELOP YOUR SKILLS TO BECOME A SUCCESSFUL HAIRDRESSER.

Study programmes delivered at our **Conway Park Campus** include:

| COURSE | LEVEL | CODE |
|---|-------|------|
| Introduction to the Hair and Beauty Sector | Entry | G095 |
| NVQ Hairdressing Diploma | 1 | G022 |
| NVQ Hairdressing Diploma | 2 | G024 |
| NVQ Hairdressing Diploma | 3 | G039 |

Your study programme is tailored to your individual needs and usually lasts 2 years. See page 8 for details. Level 2 and level 3 apprenticeships in Hairdressing are also available – visit **wmc.ac.uk/apprenticeships** for full details.

WHERE NEXT?

Many students progress into jobs and/or apprenticeships once they have completed their full-time study programmes. You may decide to become self-employed and set up your own business once you have gained the skills and experience.

If you have decided which course you want to study, apply online at **wmc.ac.uk**. If not, get in touch with our Student Advisers who will help you.

WHERE ARE THEY NOW?

You could say **Ashley Waterhouse** had a 'head' start in his career as a hairdresser as he was influenced by his mum, a hairstylist who owns her own hairdressing salon. Ashley has progressed from level 2 to a level 3 Hairdressing course at Wirral Met and has been praised as an excellent hair colourist, by both staff and clients. In addition to taking a level 3 hairdressing course Ashley finds time to work at a wholesale hairdressers as a sales adviser due to his extensive knowledge of the industry. Ashley also works part-time in a local salon as a lead stylist.





INDUSTRY OPPORTUNITIES

CAREERS INCLUDE:

**BARBER, HAIR STYLIST, SESSION STYLIST,
SALON MANAGER, SELF EMPLOYMENT**



**YOUR EARNING
POTENTIAL:**

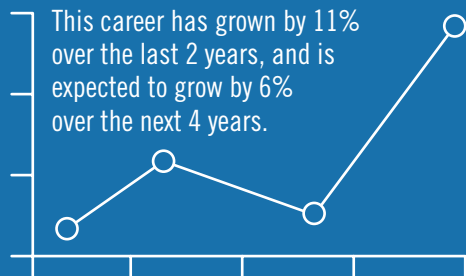


Fully trained Hairdressers can earn between...

£12-19,000 PER YEAR

Top professional Hairdressers can earn...

£30,000 PER YEAR



Sources: nationalcareersservice.direct.gov.uk | wmc.emsicareercoach.co.uk

BEAUTY THERAPY

ENROL WITH WIRRAL MET AND YOU WILL TRAIN IN OUR FULLY EQUIPPED BEAUTY SALONS AT OUR CONWAY PARK CAMPUS. WITH THE SUPPORT OF OUR EXPERIENCED STAFF, YOU WILL SOON BE PREPARED TO START YOUR CAREER IN THIS GROWING INDUSTRY. YOU WILL GAIN EXPERIENCE IN OUR BEAUTY SALONS AND ALSO GET INVOLVED IN COMPETITIONS TO SHOW OFF YOUR TALENTS.

Study programmes delivered at our **Conway Park Campus** include:

| COURSE | LEVEL | CODE |
|---|-------|------|
| Introduction to the Hair and Beauty Sector | Entry | G095 |
| NVQ Beauty Therapy | 1 | G036 |
| NVQ Beauty Therapy | 2 | G025 |
| NVQ Beauty Therapy | 3 | G027 |

Your study programme is tailored to your individual needs and usually lasts for 2 years. See page 8 for details. Level 2 and level 3 apprenticeships are also available – visit wmc.ac.uk/apprenticeships for full details.

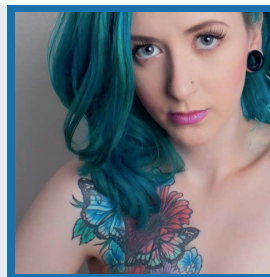
WHERE NEXT?

Once you have completed your level 1 qualification, you can progress to level 2 and/or gain employment as a junior assistant in a health spa, sports centre or beauty salon. Those completing their level 2 qualifications can become practitioners in a health spa, sports centre or beauty salon and progress to level 3 qualifications. Students completing their level 3 qualifications may work in salons, on cruise ships, in television and the media, or set up their own business.

If you have decided which course you want to study, apply online at wmc.ac.uk. If not, get in touch with our Student Advisers who will help you.

WHERE ARE THEY NOW?

Sophie Molyneux studied levels 1 and 2 Beauty Therapy at Wirral Met. In order to broaden her skills she studied as a nail technician and make-up artist at level 3. Sophie's business, 'Optima Nails and Beauty', based in Wallasey, set up her own business where she excels as a nail technician and beautician. Sophie is pursuing a level 3 course in Fashion and Photographic Make-Up.

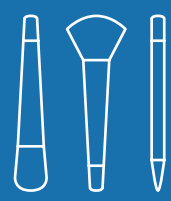




INDUSTRY OPPORTUNITIES

CAREERS INCLUDE:

**BEAUTY THERAPIST, MAKE-UP ARTIST,
MASSAGE THERAPIST, NAIL TECHNICIAN,
SALON MANAGER, SELF EMPLOYMENT**



YOUR EARNING POTENTIAL:

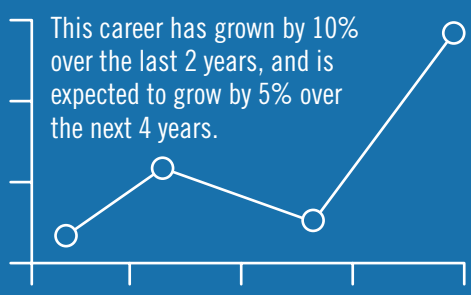


Beauty Therapists typically earn between...

£13-20,000 PER YEAR

Salon Managers can earn over...

£33,000 PER YEAR



Sources: nationalcareersservice.direct.gov.uk | wmc.emsicareercoach.co.uk

OUR HAIRDRESSING & BEAUTY SALONS

AS A FULL-TIME STUDENT, YOU WILL DEVELOP YOUR SKILLS AND EXPERIENCE WORKING IN OUR HAIRDRESSING AND BEAUTY SALONS, WHICH OPERATE AS A COMMERCIAL SALON, OFFERING A RANGE OF HAIRDRESSING SERVICES AND BEAUTY TREATMENTS TO THE PUBLIC.

Whilst working in the salon, you will develop your skills under the expert guidance of our tutors and be able to offer clients quality treatments using top brand products such as Crystal Clear, Wella and Dermalogica.





HEALTH & SOCIAL CARE

WORKING CLOSELY WITH NHS TRUSTS, LOCAL AUTHORITIES AND PRIVATE BUSINESSES ACROSS THE ADULT SOCIAL CARE AND HEALTHCARE INDUSTRIES, WE HAVE BUILT OUR REPUTATION FOR QUALITY EDUCATION AND TRAINING THAT MAKES A DIFFERENCE.

Study programme delivered at our **Twelve Quays Campus**:

| COURSE | LEVEL | CODE |
|--|-------|------|
| NCFE Preparation for Health, Care & Early Years | 1 | J199 |
| Health and Social Care Extended Diploma | 2 | J023 |
| Health & Social Care Preparing to Work | 2 | J187 |
| NCFE CACHE Certificate in Health & Social Care | 3 | J198 |

Your study programme is tailored to your individual needs and usually lasts 2 years. See page 8 for details. We have a variety of apprenticeships available in Health and Social Care at levels 2 and 3 – visit wmc.ac.uk/apprenticeships for full details.

Wirral Met College works in partnership with Wirral University Teaching Hospital NHS Foundation Trust to offer traineeships. Students doing traineeships have worked in areas such as Clinical Support, Business Administration, Engineering, Hairdressing and Catering. To find out about what a traineeship involves and current traineeship vacancies, visit wmc.ac.uk/apprenticeships for full details.

WHERE NEXT?

Many students progress into jobs once they have completed their full-time study programmes, and other level 3 students progress onto Higher Education to study towards a degree, such as the BSc (Hons) Psychology at Wirral Met College, which is validated by the University of Liverpool.

Working in Partnership with



If you have decided which course you want to study, apply online at wmc.ac.uk. If not, get in touch with our Student Advisers who will help you.

WHERE ARE THEY NOW?

James Murren studied a level 2 Diploma in Clinical Healthcare and a level 3 Diploma in Advanced Health-Perioperative at Wirral Met. He now works full-time as an Assistant Theatre Practitioner and is progressing to take a level 5 Assistant Practitioner apprenticeship at Prem House Clinic in Liverpool.



INDUSTRY OPPORTUNITIES

CAREERS INCLUDE:

**CARE ASSISTANT, COUNSELLOR, DENTAL NURSE,
HEALTH PROFESSIONAL, NURSE, SOCIAL WORKER**



**YOUR EARNING
POTENTIAL:**

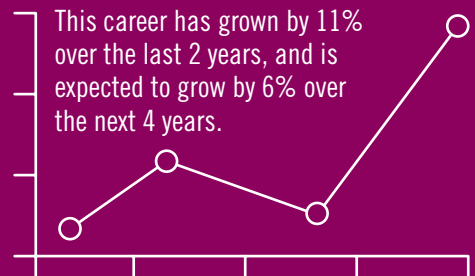


Nurses can earn between...

£23-43,000 PER YEAR

Health Professional can earn upwards of...

£65,000 PER YEAR



Sources: nationalcareersservice.direct.gov.uk | wmc.emsicareercoach.co.uk

HOSPITALITY & CATERING

WORKING IN OUR FULLY LICENSED TRAINING RESTAURANT, THE BIRCHES, YOU WILL DEVELOP A RANGE OF SKILLS AND EXPERIENCE TO PREPARE YOU FOR WORK IN THIS EXCITING PROFESSION. YOU WILL ALSO TAKE PART IN A NUMBER OF THEMED EVENTS AND COMPETITIONS, TO DEVELOP YOUR WORK EXPERIENCE.

Study programmes delivered at our **Conway Park Campus** include:

| COURSE | LEVEL | CODE |
|--|-------|------|
| Introduction to the Hospitality Industry | Entry | H015 |
| Introduction to Culinary Skills Certificate | 1 | H093 |
| NVQ Hospitality Services | 1 | H068 |
| NVQ Professional Cookery Diploma | 2 | H017 |
| Culinary Skills Diploma | 2 | H094 |
| ABC Pastry & Confectionary Award | 2 | H099 |
| NVQ Advanced Professional Diploma Cookery | 3 | H081 |

Your study programme is tailored to your individual needs and usually lasts 2 years. See page 8 for details. Level 2 and level 3 Apprenticeships in Food & Beverage Service and Professional Cookery are also available – visit wmc.ac.uk/apprenticeships for full details.

WHERE NEXT?

Students completing level 1 and 2 study programmes progress into jobs or apprenticeships within the catering and hospitality industry.

If you have decided which course you want to study, apply online at wmc.ac.uk. If not, get in touch with our Student Advisers who will help you.

WHERE ARE THEY NOW?

Gemma Powell is currently studying an Advanced level Apprenticeship in Hospitality and Catering. She started in a school kitchen as an apprentice in March 2015 and was offered a permanent position in July 2016 after her hard work. Gemma was trained in all of the job roles in the kitchen and worked so well with her team that she has now taken over the running of one site.





INDUSTRY OPPORTUNITIES

CAREERS INCLUDE:

**BAR MANAGER, CHEF, HOTEL MANAGER,
RESTAURANT MANAGER,
FRONT OF HOUSE RECEPTIONIST**



YOUR EARNING POTENTIAL:



A Chef may earn between...

£14-22,000 PER YEAR

Hotel and Accommodation Managers can earn around...

£42,000 PER YEAR



Sources: nationalcareersservice.direct.gov.uk | wmc.emsicareercoach.co.uk

LOGISTICS & WAREHOUSING

WIRRAL MET COLLEGE'S SPECIALIST NEW LOGISTICS & WAREHOUSING CENTRE HAS BEEN CREATED TO MEET THE INCREASING DEMAND FOR PEOPLE WITH SKILLS AND QUALIFICATIONS TO SUPPORT THIS GROWING SECTOR, INCLUDING CAREERS IN WAREHOUSING, FORKLIFT TRUCK DRIVING, SUPPLY CHAIN MANAGEMENT AND WAREHOUSE MANAGEMENT.

Students will also have the opportunity to attain a Forklift Truck driving qualification whilst on the course, improving their employment potential even further. In addition, key employability skills such as team working and customer service will be developed and students will also get the opportunity to complete high-quality work placements with local employers to build on their knowledge and experience of this fast-growing industry.

Study programme delivered at our **Twelve Quays Campus**:

| COURSE | LEVEL | CODE |
|-------------------------------------|-------|------|
| Logistics - Warehousing and Storage | 1 & 2 | F035 |

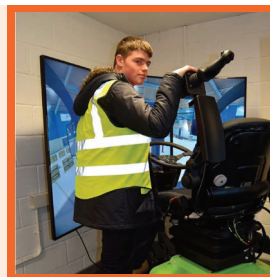
WHERE NEXT?

Many students progress into jobs or an apprenticeship after completing their level 1 and 2 study programmes.

If you have decided which course you want to study, apply online at wmc.ac.uk. If not, get in touch with our Student Advisers who will help you.

WHERE ARE THEY NOW?

Brenden McDougall has been described by his tutors as 'the perfect student'. Always early for college with 100% attendance both here and in the workplace, Brenden worked overtime on his placement and went on to gain full-time employment with Regal, a wholesalers based in Bromborough. He has since gone on to complete his Reach Forklift Truck licence in the workplace.





INDUSTRY OPPORTUNITIES

CAREERS INCLUDE:

WAREHOUSE MANAGER, WAREHOUSE OPERATIVES, FORKLIFT TRUCK OPERATOR



YOUR EARNING POTENTIAL:

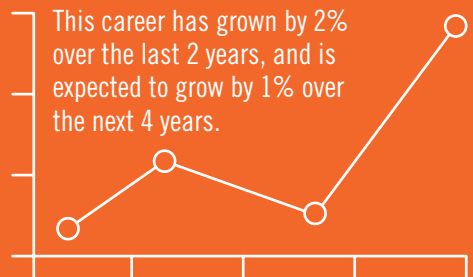


Warehouse Managers can earn between...

£26-43,000 PER YEAR

Warehouse Operatives can earn from...

£16-32,000 PER YEAR



Sources: nationalcareersservice.direct.gov.uk | wmc.emsicareercoach.co.uk

PUBLIC & UNIFORMED SERVICES

THERE ARE PLENTY OF CAREERS TO CHOOSE FROM, WHETHER YOU WANT TO WORK IN THE ARMED FORCES, POLICE SERVICE, FIRE SERVICE OR OTHER UNIFORMED PUBLIC SECTOR ORGANISATIONS. OUTDOOR ACTIVITIES, EXHIBITIONS AND EVENTS, RUN IN CONJUNCTION WITH THE ARMED FORCES, POLICE AND FIRE SERVICE, ARE A ROUTINE PART OF THESE PROGRAMMES.

Study programmes delivered at our **Oval Campus**, Bebington, include:

| COURSE | LEVEL | CODE |
|---|-------|------|
| NCFE Military Preparation Diploma | 2 | K013 |
| BTEC Public Services Diploma | 2 | K020 |
| BTEC Public Services 90 Credit Diploma | 3 | K039 |
| BTEC Public Services Extended Diploma | 3 | K008 |
| NCFE Military Preparation | 3 | K077 |

Your study programme is tailored to your individual needs and usually lasts 2 years. See page 8 for details.

WHERE NEXT?

Students can progress into careers in the Armed Forces, Fire or Police, although some will progress into Higher Education to study on a degree programme.

If you have decided which course you want to study, apply online at wmc.ac.uk. If not, get in touch with our Student Advisers who will help you.

WHERE ARE THEY NOW?

After successfully completing the BTEC Public Services Extended Diploma at Wirral Met, **Catherine Oelofse** then progressed to basic training in the Army. Catherine is now a Corporal in the Army and works as a Logistics Supply Specialist.





INDUSTRY OPPORTUNITIES

CAREERS INCLUDE:

**ARMY, NAVY, RAF, FIRE OFFICER,
POLICE OFFICER**



**YOUR EARNING
POTENTIAL:**



Starting salaries for Police Officers are from...

£19,000 PER YEAR

Private soldiers can earn between...

£17-28,000 PER YEAR



Sources: nationalcareersservice.direct.gov.uk | wmc.emsicareercoach.co.uk

CHOOSE:

- + Independent living
- + Supported employment opportunities
- + Progression to mainstream vocational study programmes

Prep 4 Life courses offer young people (aged 16-25), with learning difficulties or disabilities, the opportunity to develop independence and work skills that will help them in adult life.

| COURSE TITLE | INDEPENDENT OPTIONS* | FUTURE OPTIONS* | VOCATIONAL OPTIONS** | PREPARATION FOR WORK** | SUPPORTED INTERNSHIP† |
|------------------------------|--|--|--|--|--|
| COURSES DESIGNED FOR: | Students with Severe Learning Difficulties | Students with Severe Learning Difficulties | Students with Severe or Moderate Learning Difficulties | Students with Moderate Learning Difficulties | Students with Moderate Learning Difficulties |
| LEVEL | Milestone 6 - Entry Level 1 | Entry Level 1 | Entry Level 2-3 | Entry Level 3 | Entry Level 3 or Level 1 |
| LENGTH OF COURSE | 1 or 2 years | 1 or 2 years | 1 or 2 years | 1 or 2 years | 1 year |
| DELIVERY METHOD | Classroom | Classroom | Classroom | Classroom | Workplace |

***INDEPENDENT OPTIONS AND FUTURE OPTIONS** - help you to develop life skills and independence.

****VOCATIONAL OPTIONS AND PREPARATION FOR WORK** - help to develop skills for employment.

†**SUPPORTED INTERNSHIP** - combines work experience with learning that could lead to employment.

ON THESE COURSES, YOU WILL:

- + learn independence skills that will help you at home and work
- + try some practical activities and work skills
- + get lots of support to help you achieve at your own level and pace
- + work on your communication and number skills
- + have a go at leisure and community activities

DID YOU KNOW?

WE OFFER:

- ⊕ a thorough assessment of your needs
- ⊕ support to develop your person centred plan (a plan designed just for you)
- ⊕ small group teaching, with specialist teachers
- ⊕ one-to-one support, if you need it
- ⊕ specialist equipment
- ⊕ fully accessible facilities
- ⊕ highly trained care staff
- ⊕ close partnership working with other agencies including Physiotherapy, Occupational Therapy, Healthcare

For more information on these courses please contact the Additional Learning Support team on **0151 551 7435** or **0151 551 7777**.

WHERE NEXT?

Many students on the Prep 4 Life courses progress into mainstream study programmes at Wirral Met College, and others move onto jobs or independent living in the local community.

MEET THE STUDENT

During **Karl Beswick's** time at Wirral Met College he completed a BTEC Introductory to Business, level 1 qualification and developed employability skills during his work experience placement. This helped Karl secure a place on our Supported Internship programme that helped Karl secure a job at ASDA Birkenhead.



PRINCE'S TRUST TEAM

IF YOU ARE AGED 16 TO 25 AND YOU WOULD LIKE TO DEVELOP YOUR PERSONAL SKILLS WORKING AS PART OF A TEAM WITHIN YOUR LOCAL COMMUNITY, THEN THE PRINCE'S TRUST TEAM PROGRAMME IS FOR YOU.

This 12 week programme includes outdoor pursuits, work placement opportunities and a one week residential leading towards a final presentation of your achievements.

| COURSE | LEVEL | CODE |
|---------------------|---------------|------|
| Prince's Trust Team | Entry Level 3 | K014 |
| Prince's Trust Team | 1 & 2 | K014 |

WHERE NEXT?

Students studying on these programmes progress into college study programmes, employment or an apprenticeship.

MEET THE STUDENT

Rebecca Stevenson joined the Prince's Trust Team whilst being a carer for her mum. She joined the course to boost her confidence. She was an exemplary student, who always gave everything 100% and had perfect attendance. She completed a successful work placement and now plans to pursue a career in teaching. She has also gone on to volunteer at The Hive helping the arts and crafts classes.



SKILLS FOR LIFE & WORK

PROGRESSION INTO FURTHER EDUCATION

PROGRESSION INTO FURTHER EDUCATION IS A 30 WEEK, FULL-TIME ENTRY LEVEL 3 STUDY PROGRAMME. IT IS DESIGNED FOR 16 TO 19 YEAR OLDS WHO ARE NOT ENGAGED IN EDUCATION OR EMPLOYMENT.

Study programmes delivered at our **Conway Park Campus** include:

| COURSE | LEVEL | CODE |
|------------------------------------|-------|------|
| Introduction to Vocational Studies | Entry | K073 |
| Progression into Further Education | 1 | K057 |

If you have decided which course you want to study, apply online at wmc.ac.uk. If not, get in touch with our Student Advisers who will help you.



SCIENCE

YOU WILL STUDY IN OUR SCIENCE, TECHNOLOGY, ENGINEERING AND MATHS (STEM) CENTRE AT OUR TWELVE QUAYS CAMPUS. SPECIALIST FACILITIES INCLUDE A CHEMICAL INSTRUMENTATION LAB WITH NUCLEAR MAGNETIC RESONANCE EQUIPMENT, MOLECULAR BIOLOGY AND MICRO BIOLOGY LABS, A ROBOTICS AND MECHANICS ARENA, A PHYSICS AND ELECTRONICS LAB AND A LIFE SCIENCE LAB.

Study programmes delivered at our **Twelve Quays Campus** include:

| COURSE | LEVEL | CODE |
|---|-------|------|
| BTEC Applied Science Diploma | 2 | S001 |
| BTEC Applied Science (Medical Science) 90 Credit Diploma | 3 | S143 |
| BTEC Applied Science Extended Diploma | 3 | S201 |

Your study programme is tailored to your individual needs and usually lasts for 2 years. See page 8 for details. Level 2 and level 3 apprenticeships in Laboratory and Science Technicians are also available – visit wmc.ac.uk/apprenticeships for full details.

WHERE NEXT?

Many students progress into jobs and/or apprenticeships once they have completed their full-time study programmes. Level 3 students often progress onto Higher Education programmes such as the Higher National Certificate (HNC), or Higher National Diploma (HND) programmes in Applied Chemistry. Students can also progress into the Foundation Degree in Chemistry and then the BSc (Hons) Applied Chemistry Degree, which are offered at Wirral Met College working in partnership with the University of Central Lancashire (UCLan).

Working in Partnership with



If you have decided which course you want to study, apply online at wmc.ac.uk. If not, get in touch with our Student Advisers who will help you.





WHERE ARE THEY NOW?

Erin Holman began her apprenticeship with Hosokawa Micron and joined Wirral Met College to study an NVQ in Laboratory and Associated Technical Activities. She is now studying her Foundation Degree in Chemistry. Erin plans to finish the honours degree at UCLan, one of our partner universities.



INDUSTRY OPPORTUNITIES

CAREERS INCLUDE:

**BIOLOGIST, CHEMICAL CHEMIST,
FORENSIC SCIENTIST, PHARMACIST**



YOUR EARNING POTENTIAL:



As a Forensic Scientist, new workers generally start around...

£23,069 PER YEAR

An experienced forensic scientist can earn up to...

£53,372 PER YEAR



Sources: nationalcareersservice.direct.gov.uk | wmc.emsicareercoach.co.uk

SPORTS, FITNESS & OUTDOOR EDUCATION

THESE STUDY PROGRAMMES ARE BASED IN THE OVAL CAMPUS IN BEBINGTON, AND INCLUDE MANY OUTDOOR PURSUITS WITHIN THE UK. WITH THE HELP OF YOUR TUTORS' EXTENSIVE EXPERIENCE IN A RANGE OF OUTDOOR ACTIVITIES AND COMPETITIVE SPORTS, YOU WILL DEVELOP THEORETICAL KNOWLEDGE AND PHYSICAL SKILLS TO SUCCEED IN THIS EXHILARATING INDUSTRY.

Study programmes delivered at our **Oval Campus**, Bebington include:

| COURSE | LEVEL | CODE |
|---|-------|------|
| VTCT First Steps into Sport Health and Fitness | 1 | K056 |
| VTCT Sports Studies | 2 | K015 |
| VTCT Fitness Instructor | 2 | K047 |
| VTCT NVQ Activity Leadership (Football Studies) | 2 | K065 |
| BTEC Outdoor Adventure Sport | 3 | K083 |
| BTEC Outdoor Adventure Sport Subsidiary Diploma | 3 | K084 |
| BTEC Sport and Exercise Science 90 Credit Diploma | 3 | K040 |
| VTCT Certificate in Personal Training | 3 | K048 |
| BTEC Sport and Exercise Science Extended Diploma | 3 | K009 |
| BTEC Sport Diploma (Football Performance and Excellence) | 3 | K085 |
| BTEC Sport Subsidiary Diploma (Football Performance and Excellence) | 3 | K086 |
| VTCT Personal Training Diploma | 3 | K087 |

Your study programme is tailored to your individual needs and usually lasts 1 year. See page 8 for details.

WHERE NEXT?

Many students progress into jobs and/or self-employment once they have completed their full-time study programmes. Level 3 students often progress onto Higher Education to study on degree programmes.

If you have decided which course you want to study, apply online at wmc.ac.uk. If not, get in touch with our Student Advisers who will help you.

WHERE ARE THEY NOW?

Joshua Mizen studied a level 3 Diploma in Exercise, Health and Fitness at Wirral Met College. He is now utilising his skills at Wirral Society for the Blind and Partially Sighted (WSBPS) where he leads exercise classes with the Blind and visually impaired. Josh also acts as a care worker for visually impaired people.



2017 Wirral Schools' Football Competition Cup Winner

INDUSTRY OPPORTUNITIES

CAREERS INCLUDE:

**FITNESS COACH/INSTRUCTOR, GYM MANAGER, PE TEACHER,
PERSONAL TRAINER, SPORTS DEVELOPMENT OFFICER, SPORTS
INSTRUCTOR, SPORTS/LEISURE CENTRE MANAGER**



YOUR EARNING POTENTIAL:



Salaries for Sports Development Officers range from...

£20-35,000 PER YEAR

Experienced Fitness Instructors can earn around...

£20,000 PER YEAR



Sources: nationalcareersservice.direct.gov.uk | wmc.emsicareercoach.co.uk

TRAVEL & TOURISM

WIRRAL MET COLLEGE IS THE ONLY COLLEGE IN THE NORTH WEST OF ENGLAND TO BE GRANTED THE PRESTIGIOUS SWISSPORT ACADEMY STATUS (SWISSPORT IS THE WORLD'S LEADING SERVICE COMPANY TO AIRLINES AND AIRPORTS).

Students studying on the level 2 course will have a guaranteed job interview with Swissport (subject to eligibility and a College recommendation). You will take part in behind-the-scenes tours of UK and overseas airports and hear from guest speakers.

Study programmes delivered at our **Conway Park Campus** include:

| COURSE | LEVEL | CODE |
|---|-------|------|
| NCFE Passport to Travel | E3 | L065 |
| Check-in to Travel | 1 | L048 |
| NCFE Award in Aviation | 2 | L045 |
| Cabin Crew and Aviation Operations | 2 | L037 |
| International Travel Studies | 2 | L063 |
| BTEC Aviation Operations Diploma | 3 | L024 |
| BTEC Travel and Tourism Extended Diploma | 3 | L034 |

Your study programme is tailored to your individual needs and usually lasts for 2 years. See page 8 for details.

WHERE NEXT?

Many students progress to employment once they have completed their full-time study programmes, and our level 3 students often progress onto the Higher National Diploma (HND) programme in Travel and Tourism Management at Wirral Met College.

If you have decided which course you want to study, apply online at wmc.ac.uk. If not, get in touch with our Student Advisers who will help you.

WHERE ARE THEY NOW?

Jacey Aspinall completed the BTEC National Diploma in Aviation Operations. Jacey now works with Etihad Airways, based in Abu Dhabi, as cabin crew. She loves her job and this just goes to show where skills and dedication can take you.





INDUSTRY OPPORTUNITIES

CAREERS INCLUDE:

**AIR TRAFFIC CONTROLLER, ATTRACTION MANAGER,
CABIN CREW, EVENT MANAGER, FLIGHT OPERATIONS MANAGER,
OVERSEAS RESORT REPRESENTATIVE, TOUR MANAGER**



YOUR EARNING POTENTIAL:



Air Traffic Controllers can earn between...

£36-50,000 PER YEAR

Experienced Air Cabin Crew can earn between...

£15-21,000 PER YEAR



Sources: nationalcareersservice.direct.gov.uk | wmc.emsicareercoach.co.uk

HOW DO I APPLY?

To help you make the right choice, call our Student Advisers on **0151 551 7777** or come and see us at the Conway Park Campus for impartial advice and guidance – we will help you to explore your options and get on the right course.

1. APPLY

- a. Visit wmc.ac.uk to search for courses and apply online, or
- b. Post your application form to Student Services, Wirral Met College, Conway Park Campus, Europa Boulevard, Birkenhead, CH41 4NT or bring it into one of the campus' receptions.
- c. We will acknowledge your application form and invite you to attend an interview.

2. INTERVIEW

- a. This is to help us to find out as much as we can about you, before you join us. You will be invited into the College to meet the tutors and discuss the course.
- b. Some courses require you to present a portfolio of your work during your interview.
- c. You can also discuss any learning support needs you may have.

3. OFFER

- a. We will offer you a place on a study programme at the College which is right for you.
- b. We will give you a letter confirming your offer of a place on the study programme.
 - i. If you have an unconditional offer, please confirm you want to accept your offer and return the form to Student Services.
 - ii. If you have an offer dependent on the grades you get in your exams, please confirm you want to accept your offer and return the form to Student Services (don't wait for your exam results). We will then let you know how and when you can complete your enrolment, before you start in September.

4. KEEPING IN TOUCH

- a. We will keep in touch with you with regular updates about Wirral Met College. Don't forget, if you change your phone number(s) or email address, please let us know.

5. START YOUR PROGRAMME

Remember to apply as early as possible, as some study programmes are very popular and fill up quickly!

If you have any queries, you change your mind, or you do not get the results you expect, please call our Student Advisers on **0151 551 7777**, or call in to the Conway Park Campus to see them in person. We will help you!



DID YOU KNOW?

WIRRAL MET OFFERS UNIVERSITY LEVEL COURSES VALIDATED BY LOCAL UNIVERSITIES

Visit wmc.ac.uk/higher-education for details of Degrees, Foundation Degrees, Higher National Diplomas (HNDs), Higher National Certificates (HNCs), Certificate in Education (Education & Training) or Postgraduate Certificate in Education (Education & Training) qualifications.



We would love to hear your comments about this prospectus. Please email marketing@wmc.ac.uk and let us know if we can improve it. Please note every care has been taken to ensure the details in this prospectus were accurate at time of going to print. However, we may need to update our course offer or services from time to time. Please visit our website at wmc.ac.uk for the latest information.



**PICK UP YOUR COPY OF OUR HIGHER
EDUCATION PROSPECTUS OR VISIT
WMC.AC.UK/HIGHER-EDUCATION
FOR MORE DETAILS**





Wirral Met College

0151 551 7777 | wmc.ac.uk |    

