



UNIVERSITY LEVEL COURSES 2023-24

Careers Start Here



CONTENTS

Useful information

- | | | | |
|----|----------------------------------|----|-----------------------------------|
| 3 | Welcome from the Principal | 20 | How to Apply |
| 4 | Why Choose Wirral Met? | 22 | Funding & Financial Support |
| 6 | Aim Higher | 26 | Student Support |
| 8 | We Partner with Top Universities | 30 | Exclusive links with Industry |
| 11 | Open Events | 32 | Welcome from your students' union |
| 13 | Graduate with us | 34 | We celebrate Diversity |
| 14 | WMC University Centre | 88 | How to Find us |
| 18 | Additional Campus Facilities | 90 | Connect with us |

University level courses

- 39 Accounting & Human Resources
- 45 Art, Design & Creative Media
- 53 Childcare & Early Years Education
- 57 Counselling
- 61 Engineering
- 65 Science
- 69 Social Studies
- 73 Teaching & Assessing
- 78 Higher Apprenticeships
- 80 Occupational Traineeships

Get University Ready

- 84 Pre-Access courses to Higher Education
- 86 Access to Higher Education courses

If you haven't got the qualifications or confidence to start on a Higher Education course immediately, we can help you prepare with our pre-access and access courses.

WELCOME FROM THE PRINCIPAL

Thank you for considering Wirral Met College for your university level education.

I realise that this is an important decision that has the potential to be life changing and we would be delighted to help you find the most appropriate course to help you progress into a professional career and compete in today's fast changing market.

We aim to provide an exciting, dynamic and successful learning experience for all of our students. If you choose to join us, our qualified and experienced team of staff will support you in every aspect of your studies. We have excellent partnerships with a number of universities and I am sure you already realise that studying at your local college provides excellent value for money!

We have invested millions of pounds into our campuses and our excellent facilities are complete with the latest technology and industry standard workshops, to enable you to harness innovation as you develop your learning. We also understand that it can be difficult to combine study with work and family commitments so we have developed an extensive range of student resources and support, designed to help you succeed.

Don't just take our word for it, come and see what we have to offer. If you choose to join our many successful students, I look forward to seeing you on campus and eventually, meeting you and your family at our annual Higher Education Graduation Ceremony, where we will celebrate your success in your cap and gown!

Sue Higginson
Principal and CEO



WHY CHOOSE WIRRAL MET?

1. DEGREES FROM LEADING UNIVERSITIES

Gain a degree from one of our partner universities; University of Chester, University of Liverpool, University of Central Lancashire, or an industry leading accredited professional qualification whilst studying locally at Wirral Met College.

2. FLEXIBILITY

You can fit your education around your work and family commitments. Our full-time courses require 3 days per week and we offer a range of part-time study programmes.

3. QUALITY LEARNING

The Quality Assurance Agency for Higher Education (QAA) has confirmed the high quality and standards of provision at Wirral Met College.

4. OUTSTANDING STUDENT SUPPORT

Our small class sizes ensure that all of our students get outstanding personal support. Additional Learning Support is also available; look at **page 26** to see if you are eligible.

5. LOWER FEES & COSTS

Our courses cost less than many universities and allow students to save money on accommodation. For guidance on fees and loans, visit **page 22**.

6. ACCESS TO SPECIALIST FACILITIES

Our multi-million pound award-winning campuses offer students an array of world class facilities that reflect real working environments and standards. See **page 14** to explore our campuses.

7. STUDENT BURSARIES

Our students that study on full-time degree programmes can access two types of bursary:

⊕ Support Bursary

£500 per annum for students with a household income below £25,000

⊕ Access and Progression Bursary

£500 per annum for students with a household income between £25,001 and £42,600 and who have studied at Wirral Met College within the previous two years.

8. EXCELLENT EMPLOYER LINKS

We work with hundreds of employers across a wide range of sectors to offer our students the hands-on industry experience they need. Our strong employer links and WorldSkills UK Centre of Excellence status ensure our curriculum matches that of local and regional skill needs.

9. INDUSTRY EXPERIENCED TEACHING PROFESSIONALS

Our team of lecturers have expert knowledge in their fields, bring a breadth of industry experience to their teaching, and will be there to guide you from day one.

10. FANTASTIC STUDENT EXPERIENCE

Our small class sizes and friendly team of staff mean that you won't get lost in the crowd. Our Students' Union run a range of activities throughout the year which you can get involved in. For more information on student life see **page 32**.

↑ AIM HIGHER

Kirsty Anne Wilson
BA (Hons) Photography

Our fees are lower than traditional universities, providing great value for money. We also provide a bursary to help fund your programme see page 22.



APPLY NOW TO ACHIEVE YOUR DREAM CAREER

Gain a degree from one of our partner universities or an industry-leading accredited professional qualification.

Study locally and get the degree you want.

If you are thinking of studying for a Degree, HND or professional qualification, then look no further than Wirral Met College. Our multi-million pound award winning campuses offer students an array of world class facilities.

We have partnered with UCLan, The University of Liverpool and University of Chester so you can achieve a full honours degree from a prestigious awarding university; and all our tutors are industry specialist, highly qualified professionals.

We offer smaller class sizes and more contact time with tutors than traditional universities, plus many of our courses offer flexible hours, so you can easily combine studying with work or family commitments.

Working in partnership with:



Courses accredited by:



WE PARTNER WITH TOP UNIVERSITIES

Study a first class degree from leading universities at Wirral Met.



University of Central Lancashire (UCLan)

The University of Central Lancashire (UCLan) has evolved to become a world-class institution and is placed in the top 7% of universities worldwide by The Centre for World University Rankings 2022-23 (CWUR). It holds the maximum five-star rating in the QS Stars University Ratings for Teaching, Employability, Facilities, Inclusiveness and Internationalisation. UCLan graduates achieve outstanding results and are highly employable. 95.5% of UCLan students enter employment or further study within 6 months of graduating (HESA, 2018).

- + Certificate in Education
- + Postgraduate Certificate in Education



University of Liverpool

The University of Liverpool is ranked as one of the top 200 universities in the world with 88% of its psychology research classified as world-leading or internationally excellent. It also has a long history in the field of psychology research and educational provision, being one of the UK's oldest academic psychology departments. Its research-connected approach to teaching is at the heart of all programme development and design, resulting in students being exposed to high impact research from Day 1. The University of Liverpool supports students as they become highly employable, creative and culturally rich graduates with the capacity to find employment that will enable them to be agents for change in a connected world.

- + BSc (Hons) Psychology (2+2)



University of Chester

From its roots in the North West of England, as the country's first purpose-built provider of higher education for teachers, the University of Chester now offers a comprehensive range of apprenticeships, foundation courses, undergraduate and postgraduate courses, as well as undertaking world class academic research.

Now with a diverse student body of more than 15,000 (plus those at partner institutions), drawn from every continent, the University is

committed to developing innovative and socially relevant curricula with a wide range of educational providers both within the UK and overseas.

- + BA (Hons) Illustration with Animation
- + BA (Hons) Photography (1 year top-up)
- + BA (Hons) Early Years
- + BA (Hons) Sociology with Criminology

Professional accreditation

Our higher level, professional qualification courses are accredited by industry leading bodies.



Upcoming Open Events

Thursday 6 October 2022
4.30pm – 7pm

Thursday 12 January 2023
4.30pm – 7pm

Thursday 16 March 2023
4.30pm – 7pm

Wednesday 21 June 2023
4.30pm – 7pm

To book your place,
simply scan the QR
code or head
to wmc.ac.uk/events



OPEN EVENTS

Our open events are the perfect way to find out what is on offer and what it's like studying at Wirral Met College.


Come and visit us


- Discover our state-of-the-art facilities.
- Receive free information and guidance on careers, financial and learning support.
- Talk to specialist course tutors about our subjects and your career.
- Get a feel for the courses available during interactive demonstrations.
- Speak to Student Ambassadors about college life.
- Ask any questions.
- Make an application.

Can't attend?

We can provide tailored tours of our amazing facilities and help you decide the right pathway for you.

Unsure which course is best for you? Get in touch with our friendly Student Advisers:

 Give us a call on **0151 551 7777** - available every weekday from 9am to 4pm.

 Pop in to one of our drop-in sessions - head to our Conway Park campus every weekday from 10am to 4 pm, and until 6pm on Wednesdays (term time only). No appointment necessary.

Welcome to WMC University Centre

Every year we celebrate our students' graduation with a formal ceremony event at the Floral Pavilion, New Brighton. If you study a degree with us, awarded by our university partners, you will gain a degree from that university.

**GRADUATE
WITH US**



Wirral Met College



University Centre

Hamilton Campus

Argyle Street, Birkenhead, CH41 6AY

**Wirral Met College
University Centre
offers pathways
to university
level study and
professional
careers.**

Proudly working in
partnership with:



**VISIT OUR CAMPUSES ONLINE
WITH A VIRTUAL TOUR!**
wmc.ac.uk/virtual-tours

WMC University Centre - Hamilton Campus

This campus is dedicated to university level studies and professional pathways including accountancy, leadership and human resource management. It is also home to our Merseyside Trade Union Education Centre. Students can study a degree awarded by one of our university partners – University of Chester, University of Liverpool and University of Central Lancashire (UCLan) – or a higher education course delivered in partnership with key employers.

We offer pathways to Higher Education from Level 1 – Level 7:

Entry Level	Taster courses, basic skills and confidence building courses
Level 1	'Introduction To...' short courses, Functional Skills in English and maths, Traineeships
Level 2	GCSE English and maths, Pre Access to HE, Intermediate Apprenticeships
Level 3	BTEC vocational courses, Access to HE Diploma, Advanced Apprenticeship, Foundation Degree (Year 0)
Level 4	Higher National Certificate (HNC), Higher Apprenticeship, University Degree (Year 1)
Level 5	Higher National Diploma (HND), Higher Apprenticeship, University Degree (Year 2), Teacher Training Certificate in Education
Level 6	Hons Degree (BSc or BA), Degree Apprenticeship, Teaching Training PGCE
Level 7	Post Graduate Certificate in Education (Teacher Training)



Met At The Square

In addition to the excellent facilities at Conway Park, Met At The Square training restaurant, based at Hamilton Campus, provides a service on campus and also offers a contemporary fine dining experience every Thursday.

From delicate flavour packed canapés to exquisite desserts, you can expect creative cooking and exceptional service from our talented chefs, and Culinary Arts and Hospitality students.

Learning Resource Centre

At Wirral Met we have a wealth of resources to support your studies, including flexible study spaces for both individual and group work. You will also have access to the electronic resources of your awarding university when studying on a foundation or degree programme.



Twelve Quays campus is dedicated to Higher Education programmes in Science, Technology, Engineering, Arts and Media (STEAM)

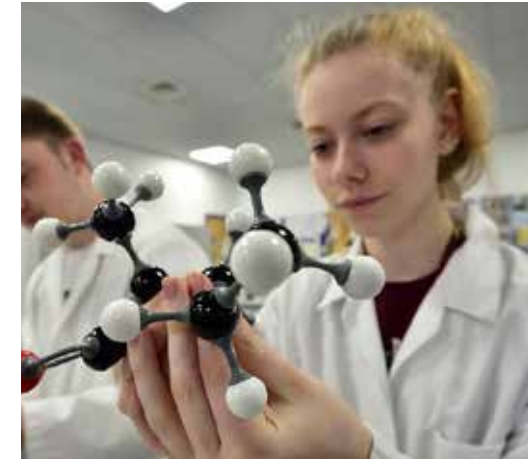
Specialist facilities include:

- Science laboratories
- Early Years learning hub
- Engineering workshops
- Media suite and music recording studio
- Professional games/VR design suite
- Art, digital and animation studios
- Photography studios with darkroom facilities
- Library and study zone
- Café with Starbucks coffee shop

ADDITIONAL CAMPUS FACILITIES TO SUPPORT YOUR STUDIES

TWELVE QUAYS

Shore Road, Birkenhead, CH41 1AG



HOW TO APPLY

Apply through UCAS

You can apply for full-time degree level courses online through UCAS by visiting ucas.com/students/apply, using the Wirral Met College's UCAS code name **WIRMC**, or code number **W73**.

- + Apply between 1 September 2022 and 15 January 2023 to be guaranteed equal consideration.
- + Apply between 16 January 2023 and 30 June 2023 for further consideration if the course you have applied for still has capacity.
- + Apply through **UCAS Clearing after 30 June 2023**.

Apply through our website

You can apply for a course directly by completing our online application form at any time throughout the year by visiting our website at wmc.ac.uk/HE. Once you have selected your course:

- + Check that you meet the relevant entry requirements
- + Visit wmc.ac.uk/HE
- + Complete an application form

Advice and guidance

Need help completing your application? Our Student Advisers will work with you every step of the way. We will help you to explore your options and find the right course for you. Call **0151 551 7777** or head to wmc.ac.uk/contact-us to complete an online enquiry form.

1. Apply

Either via UCAS or through our website.

3. Offer

If your course interview has a successful outcome, you will receive either an offer or a conditional offer.

You will need to accept this offer to secure your place on the course. If your offer is conditional, you will need to confirm your place as soon as you have your results.

What if I don't get the results I expected?

If you do not receive the exam results you expected and they do not meet the requirements of the course, our Student Advisers can help. Call **0151 551 7777** or head to wmc.ac.uk/contact-us to complete an online enquiry form.

4. Enrolment

We will keep in touch with you and let you know when you can complete your enrolment, before you start your course.

2. Meet your tutor

Once you have completed your application form online, you will be invited into the College for an informal interview to meet your tutors. Some courses will require you to present a portfolio of work. Whilst you are visiting the College, you will also be able to discuss any learning support needs that you may have.

Your English and maths skills may also be assessed to identify any additional support you may require to be successful on the course. There will also be an opportunity for you to disclose any additional learning support that you may require. Depending on the type of support you may require, you may be invited to meet a member of the Additional Learning Support Team.

5. Start your course

We'll look forward to welcoming you to Wirral Met College in September 2023!

Remember to apply as early as possible, as some courses are very popular and do fill up quickly.

FUNDING & FINANCIAL SUPPORT

Don't let the cost of HE learning put you off, check out the available funding to support your studies.

Tuition Fee Loans

Most full and part-time students will be able to access a student loan to help pay for their college tuition fees. The student loan covers college tuition fees and is paid direct to the college by the Student Loans Company. Part-time students may be eligible for a loan, subject to the programme being at least 25% equivalent of a full-time programme. The loans only become repayable after you earn a certain amount over time. Student loans are repayable for graduates following completion of their course when earning £25,000 per year or more.

Maintenance Loans

Students may be able to apply for a maintenance loan to help towards their living costs, rent, food and travel. For more information on eligibility, the application process and repayments, please visit slc.co.uk. Student loans are repayable for graduates following completion of their course. Currently you will not be required to start repaying the loan until you earn £25,000 per year or more.

For more information on the wide range of financial support available, please visit wmc.ac.uk/financial-support or call **0151 551 7777**.

Disabled Students' Allowance

Disabled Students' Allowance (DSA) is support to cover the study-related costs you have because of a disability, long term illness, mental health problem or learning difficulty. The type of support and how much you get depends on your individual needs, not your household income. The DSA is:

- Available in addition to the standard student finance package
- Does not have to be repaid
- Is not affected by household income
- Looks at the specific needs of the individual student

For more information on eligibility and how to apply, please visit gov.uk/disabled-students-allowance-dsa.

We offer a support & progression bursary of up to £500 a year.

College Bursary

Students studying on a full-time degree programme can access financial support through the college. This includes a support and progression bursary up to £500 a year. Eligibility is based on household income and you must provide evidence of this.

Access to HE Course Funding

If you take out an Advanced Learner Loan to cover the fees for an Access to HE course, and then successfully complete a degree, you don't have to repay the outstanding loan for the Access to HE course.

Find out more on **page 25**.

Advanced Learner Loans

Advanced Learner Loans give students aged 19 and over, studying eligible level 3-6 programmes, access to financial support for tuition costs from the Student Loans Company. Before applying, you will need to check your course is eligible for the loan.

Visit gov.uk/advanced-learner-loan for more information.

Training to be a teacher?

Turn to page 24 to find out about the Further Education Teacher Training Funding available!

START YOUR NEW CAREER

NEW FE TEACHER TRAINING FUNDING AVAILABLE

You may be eligible for a Further Education (FE) Initial Teacher Education (ITE) bursary. These are tax-free amounts you receive to train in certain subjects. You do not need to pay them back.

Time is running out to apply! Awards will be made from a finite government funding pot on a first-come-first-served basis, so when the money is gone it's gone.

Get up to £26,000 tax free* for courses starting September 2023 – 2024

- Maths
- Sciences including biology, chemistry and/or physics
- Engineering (and/or manufacturing)
- Computing

Get up to £15,000 tax free* for courses starting September 2023– 2024

- Special educational needs and disabilities (SEND)

Get up to £12,000 tax free* for courses starting September 2023 – 2024

- English (capped at 100 places)

*subject to eligibility.

*based on information available for 2022, please visit gov.uk for more information

ADVANCED LEARNER LOAN STUDY NOW, PAY LATER

Worried about the cost of returning to learning?

If you are aged 19 or over and thinking of studying a Level 3, 4, 5 or 6 qualification, an Advanced Learner Loan could help cover your course fees.*



Not dependent on income or employment status.



No credit check.



No repayments until you earn more than £27,295** per year.



Repayments don't start until the April after you have finished your course.



Study now, pay later.

*Terms, conditions and exclusions apply

** This figure is subject to change, visit www.gov.uk for more information

STUDENT SUPPORT

Whether it's financial support, learning support, or you simply want to chat about the right course for you, our student support services can help.

Offering a confidential and welcoming service, our team of professional experts and Student Advisers can help you with:

- + Finding the perfect course for your dream career
- + Dedicated HE welfare team
- + Accessing support services
- + Financial support and advice
- + Careers and job search advice
- + Course guidance
- + Additional Learning Support through DSA
- + Counselling
- + Disability support and advice
- + Support to stop smoking
- + Safeguarding information and guidance
- + Student activities and enrichment information

Wirral Met College's Information, Advice & Guidance Service holds the national matrix Standard for impartial advice and guidance.

Call **0151 551 7777** or head to **wmc.ac.uk** to complete an online enquiry form.



Students also have access to TalkCampus, an app where you can talk with other students around the world if you are struggling and worried about your mental health. It is a space just for you, no staff, no fear of judgement, just instant ongoing support.



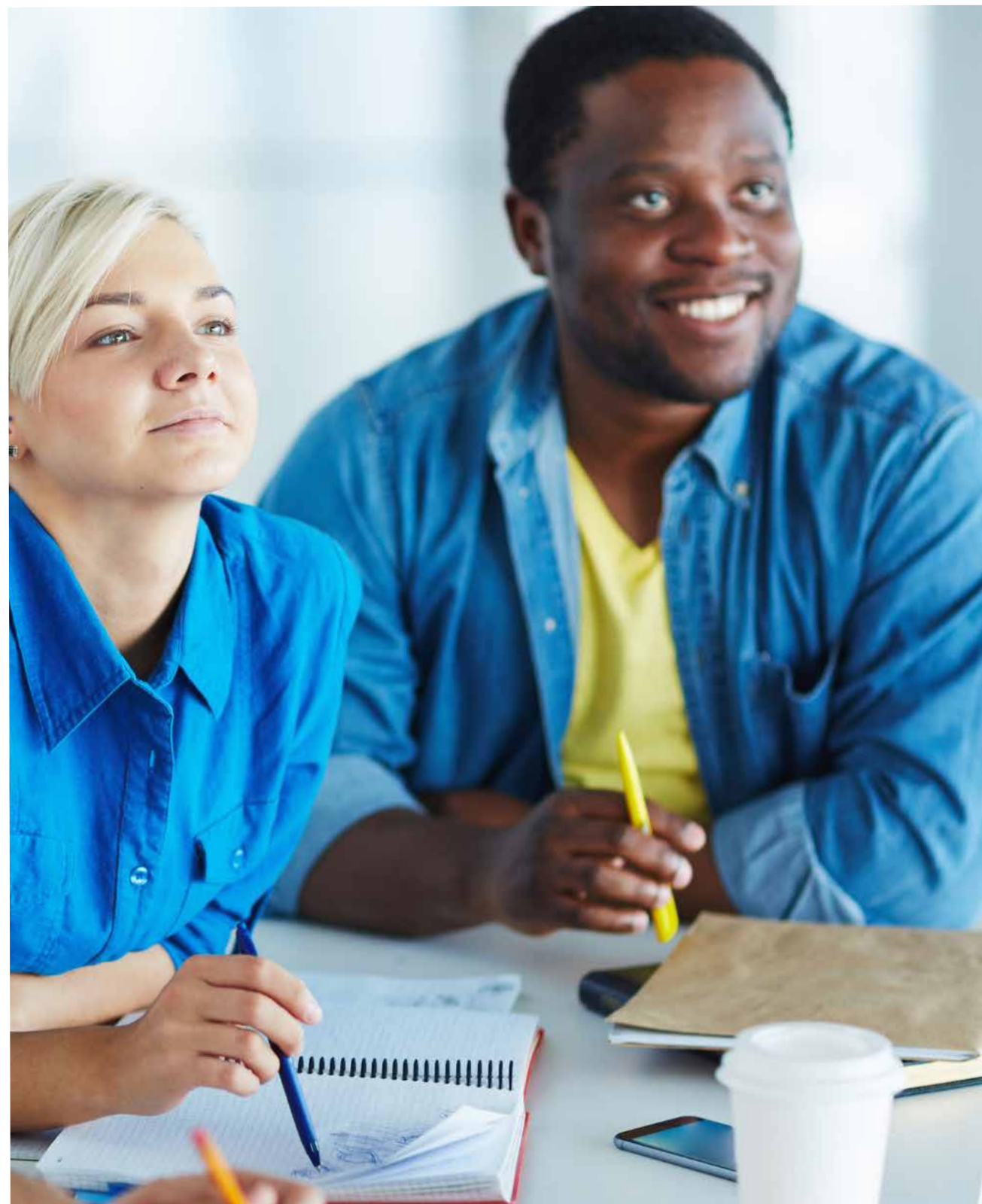
Additional Learning Support - DSA funded

Our Additional Learning Support team is available to help students to be as successful as possible and includes a team of over 70 highly trained and qualified support staff, including Specialist Support Tutors, Communication Support Workers and Learning Support Assistants.

The team works with students across all subject areas and levels and provides support for a wide range of needs, including:

- + Dyslexia/Dyspraxia
- + ADHD
- + Mental Health and Well Being
- + Physical Difficulties
- + D/deaf or Hard of Hearing
- + Blind or Partially Sighted
- + Autism Spectrum/Autism Spectrum Condition

You may be eligible for a Disabled Students' Allowance to support you during your studies. Visit **page 23** for more details.



EXCLUSIVE LINKS WITH INDUSTRY

We are rich with experience and want all of our students to be too, which is why we offer our students a range of opportunities to learn new skills, gain valuable experience and learn first-hand from our exclusive links with industry experts. Wirral Met has a team dedicated to working with our partner employers who support our students by providing first-class industry placements to ensure they are ready to enter the world of work.



WELCOME FROM YOUR STUDENTS' UNION

The moment you are a student at Wirral Met, you become a member of Wirral Met's Student Union. Student life is an important part of the college experience. Join our Students' Union and meet like-minded students, try something different and make your time at Wirral Met an unmissable experience!

We are here to:

- Help you succeed on your course
- Make friends & memories
- Represent the students' voice
- Support you during your studies with the college



ALL students have the opportunity to:



Become a student volunteer



Join our clubs and societies



Join our charity fund-raising events

Want to find out more about our students' union?
Contact them via email student.union@wmc.ac.uk

If you would like to take a more active part in the Students' Union, you can stand for election to become the next Students' Union President, a Student Course Rep or a Student Governor.

Don't forget to get your NUS TOTUM student discount card!

WE

CELEBRATE

DIVERSITY



Equality, Diversity & Inclusion

Wirral Met recognises the values and full potential of each individual and strives to creating an environment where working and learning is accessible for all. Our mission is to enhance the economic prosperity of young people, adults and employers through high quality work-related education and training.

We are proud to welcome students from countries around the globe, including Afghanistan, Bangladesh, China, Ukraine, Vietnam and Yemen.

Wirral Met is a safe and welcoming place. We have signed the City of Sanctuary pledge and are proud to support all those seeking sanctuary in our community.

We have a dedicated Equality, Diversity and Inclusion team, who, during pride month, send out information and resources for those who would like to learn more about pride, how to be a better ally and overall become a more accepting and inclusive community where everyone can feel safe, welcome and accepted.





UNIVERSITY LEVEL COURSES

- 39** Accounting & Human Resources
- 45** Art, Design & Creative Media
- 53** Childcare & Early Years Education
- 57** Counselling
- 61** Engineering
- 65** Science
- 69** Social Studies
- 73** Teaching & Assessing
- 78** Higher Apprenticeships
- 80** Occupational Traineeships

Get university ready:

- 84** Pre-Access to Higher Education
- 86** Access to Higher Education

“

I found the course interesting and it challenged me to look at real world issues in a different way. I would 100% call it a life changing experience!

”

Caitlin Sullivan completed an Accounting Apprenticeship in Wirral Borough Council's Finance and Investment Division, and is now studying a Masters at Queen's University Belfast.



AAT Professional Diploma in Accounting (level 4)

Progress further in your career within the finance sector with an AAT accredited Professional Diploma in Accounting that will teach you all about financial statements, managing accounts through budgeting, decision and control, credit management, personal taxation as well as the control of accounting systems.



Entry Requirements:

GCSE maths and English
(A*/9 to C/4)

You must also hold one of the following qualifications:

- AAT Level 3 Diploma in Accounting
- AAT Advanced Diploma in Accounting

Course Code

D050

Course Duration

1 Year

Timetable

Wed & Thu
18.00-21.00

College Campus

Hamilton

Fee

If you are aged 19 or over, the fee for this course will be £2,573 (correct as of 09/2022).



Accredited by the Association of Accounting Technicians (AAT)

Course Details:

This professional course will give you the skills to excel in a wide range of accounting and finance jobs. Building on from the knowledge acquired at levels 2 and 3, you will develop skills in taxation and credit management. You will get the opportunity to study the following modules:

- Applied management accounting
- Drafting and interpreting financial statements
- Internal accounting systems and controls
- Personal tax
- Credit & debt management

CAREER STATISTICS

Take a look at industry statistics for the local area:



2021/22 Jobs

34,734



Average Annual Salary

£30.1k

Source: EMSI 2022

CIPD Associate Diploma in People Management (level 5)

Evolve into a more senior role within your organisation as a people professional through this level 5 course. You will develop complex operational and analytic skills, whilst learning about human resources, learning and development frameworks.



Entry Requirements:

Level 2 or level 3 qualification in a related subject or a minimum of 4 GCSEs including maths and English (A*/9 to C/4).

Course Code D105

Course Duration 1 Year

Timetable Wed 18.00-21.00

College Campus Hamilton

Fee If you are aged 19 or over, the fee for this course will be £1,300 (correct as of 09/2022).

CIPD Accredited by the Chartered Institute of Personnel and Development (CIPD)

Course Details:

Achieve your HR management career goals with this prestigious qualification from the Chartered Institute of Personnel and Development. This course is perfect for those who wish to evolve into more senior roles within organisations as people professionals. Core modules include:

- Talent management and workforce planning
- Reward for performance and contribution
- Professional behaviours and valuing people
- Organisational performance and culture in practice
- Evidence-based practice and employment relationship management

CAREER STATISTICS

Take a look at industry statistics for the local area:

 2021/22 Jobs
68,817

 Average Annual Salary
£36.6k

Source: EMSI 2022

“

I am really proud that my artwork has been recognised for what it is. My time at Wirral Met has been a huge journey, I couldn't have done it without my amazing tutors.

”

BA (Hons) Photography student Kirsty Anne Wilson won a special recognition award for her thought-provoking self-portraits titled 'Inescapable – a journey into the unknown self'. Kirsty graduated in 2022 and is continuing her studies with a PGCE and working with the Royal Photographic Society.

ART, DESIGN & CREATIVE MEDIA



Photograph by Wirral Met College Graduate, Kirsty Anne Wilson

Apply online at wmc.ac.uk | 45

BA (Hons) Illustration with Animation

Through a series of lectures, creative workshops, seminars and one-to-one tutorials, you will gain new skills, knowledge and experience required to succeed in creative industries within and around illustration with animation. Studying in our state-of-the-art studios, equipped with industry standard software and equipment, you will work on self-directed and live creative projects whilst learning about critical historical theories.



Illustration by student Eve Waters - first class BA Hons degree in Animation & Illustration at Wirral Met

Entry Requirements:

- 5 GCSEs (A*/9 to C/4)
- 3 A Levels (including 2 Cs plus an A or B in a relevant subject, equivalent to 104 UCAS tariff points)
- Successful completion of a pre-degree foundation course or equivalent.

UCAS Code

W2W6

Course Code

A026

Course Duration

3 Years

Timetable

Tue, Thu & Fri
9.30-16.00

College Campus

Twelve Quays

Fee

If you are aged 19 or over, the fee for this course will be £8,340 per year (correct as of 09/2022).



University of Chester Awarded by the University of Chester

Course Details:

This broad-based Illustration with Animation course allows students to specialise in either Illustration or Animation in years 2 and 3. Focused on informing and developing students' own practice, this degree includes self-directed study and live projects. You will get the opportunity to study the following modules:

- Visual vocabulary and exploration of creative methods
- Research and image-making
- Self-evaluation

CAREER STATISTICS

Take a look at industry statistics for the local area:



2021/22 Jobs

10,530



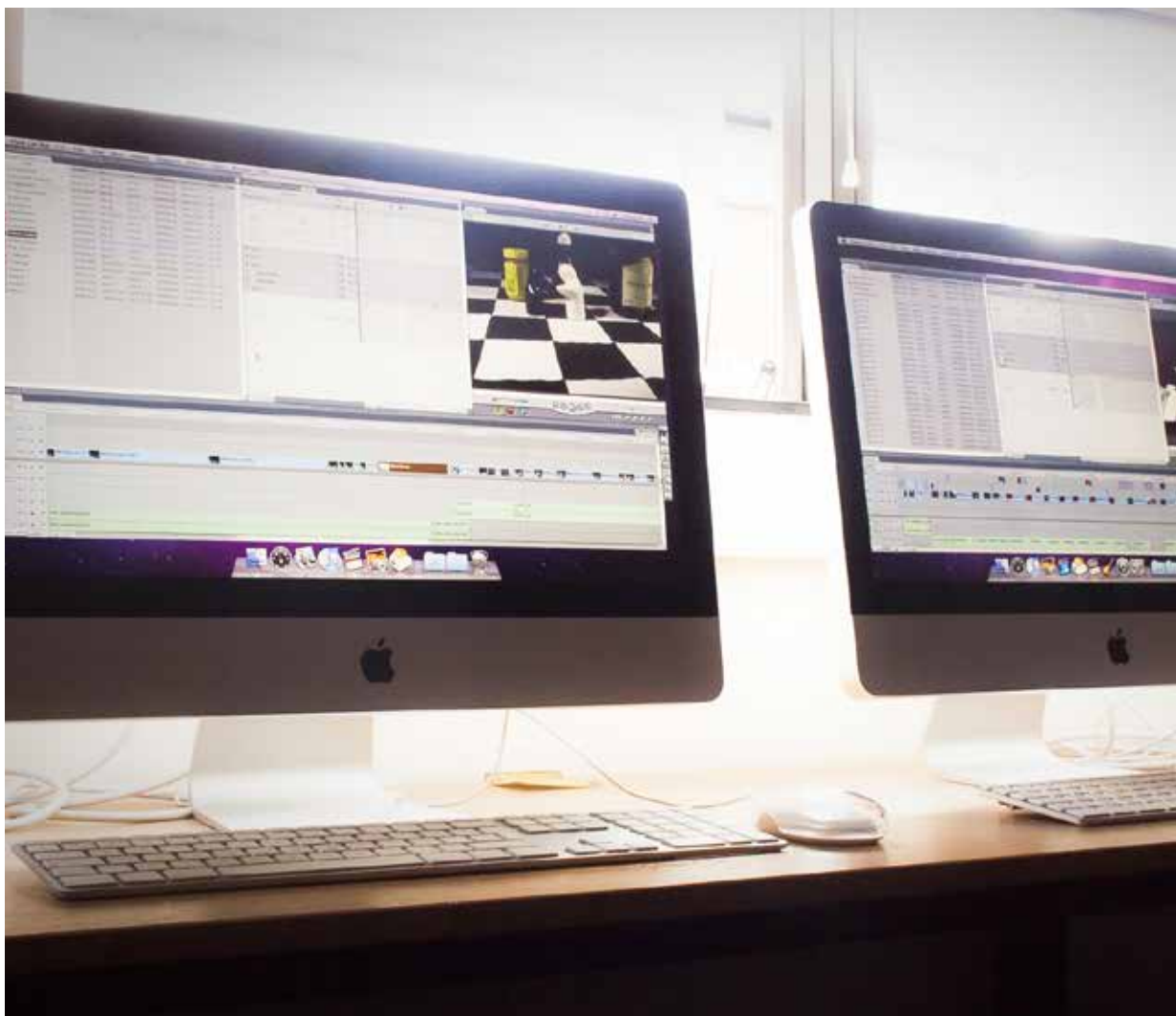
Average Annual Salary

£31.8k

Source: EMSI 2022

Higher National Diploma (HND) Creative Media Production

Gain a wide variety of filmmaking and editing skills, as well as knowledge and understanding of theoretical principles around film and sound with access to industry standard software and equipment that will prepare you for a successful career within the creative media industry.



Entry Requirements:

- GCSE maths and English (A*/9 to C/4).
- Access to HE diploma (Pass or Merit), relevant level 3 qualifications or A levels.

Applications are also welcome from students who may lack formal qualifications, if they can demonstrate the ability to study at degree level and evidence of relevant industry experience.

UCAS Code

W740

Course Code

P081

Course Duration

2 Years

Timetable

Tue
9.00-16.00

College Campus

Twelve Quays

Fee

If you are aged 19 or over, the fee for this course will be £6,540 per year (correct as of 09/2022)



Course Details:

You will get the opportunity to study the following modules:

Year One (Level 4)

- Individual project (Pearson-set)
- Creative media industry
- Professional practice
- Film practices
- Film studies
- Editing for film & television
- Light & sound
- Motion graphics practice

Year Two (Level 5)

- Collaborative project (Pearson-set)
- Personal professional development
- Advanced film production studies
- Scriptwriting for film & television
- Advanced editing & compositing
- Documentary
- Advanced editing for film & television

In addition to the core and specialist units at Level 5, you will also study a range of optional units that relate to the creative media industry.



HND Photography

Using both film and digital platforms, you will build practical skills and experience whilst developing a technical knowledge of photography with access to industry standard software and equipment that will help prepare you for an exciting career.

Entry Requirements:

- A portfolio of recent work
- GCSE maths and English (A*/9 to C/4)
- Access to HE diploma (Pass or Merit) relevant level 3 qualifications or A levels

Applications are also welcome from students who may lack formal qualifications, if they can demonstrate the ability to study at degree level and evidence of relevant industry experience.

UCAS Code

W740

Course Code

P057

Course Duration

2 Years

Timetable

Mon & Wed
9.00-15.30

College Campus

Twelve Quays

Fee

If you are aged 19 or over, the fee for this course will be £6,540 per year (correct as of 09/2022).

 Accredited by Pearson

BA (Hons) Photography (1 year top-up)

Through a series of lectures, seminars and workshops, you will learn how to contribute to culture, society and the economy through your chosen photography speciality. You will develop skills of critical enquiry, investigation and analysis from a range of different sources and utilise the outcome for the development of creative and thought-provoking photography.

Entry Requirements:

- A portfolio of recent work
- GCSE maths and English (A*/9 to C/4)
- Successful completion of a HND or foundation degree course, or equivalent.

UCAS Code

W103

Course Code

P103

Course Duration

1 Year

Timetable

Mon-Tue
9.00-17.00

College Campus

Twelve Quays


Fee

If you are aged 19 or over, the fee for this course will be £8,340 per year (correct as of 09/2022)

 University of Chester Awarded by the University of Chester

CAREER STATISTICS

Take a look at industry statistics for the local area:

 2021/22 Jobs
658

 Average Annual Salary
£27.5k

Source: EMSI 2022

“

The course has allowed me to develop skills and enhance my continuous professional development which has helped to enhance my childminding business.

”

Dawn Ford graduated in 2022 with a first-class Honours Degree. Dawn runs her own childminding business for children aged 0-8 years old.

CHILDCARE & EARLY YEARS EDUCATION



BA (Hons) Early Years

Learn methods, techniques and gain an academic understanding of early childhood care that will prepare you for a rewarding career dedicated to the care and development of children.



CAREER STATISTICS

Take a look at industry statistics for the local area:



2021/22 Jobs

5,371



Average Annual Salary

£31.9k

Source: EMSI 2022

Entry Requirements:

- 112 UCAS tariff points made up of the following:
- 3 A levels or equivalent (i.e. CACHE level 3 diploma)
- GCSE maths and English (A*/9 to C/4)

UCAS Code

X420

Course Code

N104

Course Duration

3 Years

Timetable

Mon
9.30-20.30

College Campus

Twelve Quays

Fee

If you are aged 19 or over, the fee for this course will be £8,340 per year (correct as of 09/2022)



University of
Chester

Awarded by the
University of Chester

Course Details:

This degree programme is focused on the methods, techniques and academic understanding of early childhood care to enable graduates to apply their skills to the profession. Students are required to be working or volunteering in an early years setting. You will get the opportunity to study the following modules:

Year One:

- Safeguarding and protection in the early years
- Fostering positive relationships
- The importance of play in the early years
- The developing child

Year Two:

- Diversity & inclusive practice
- Children's health and well-being
- Enabling environments
- The changing face of childhood

Year Three:

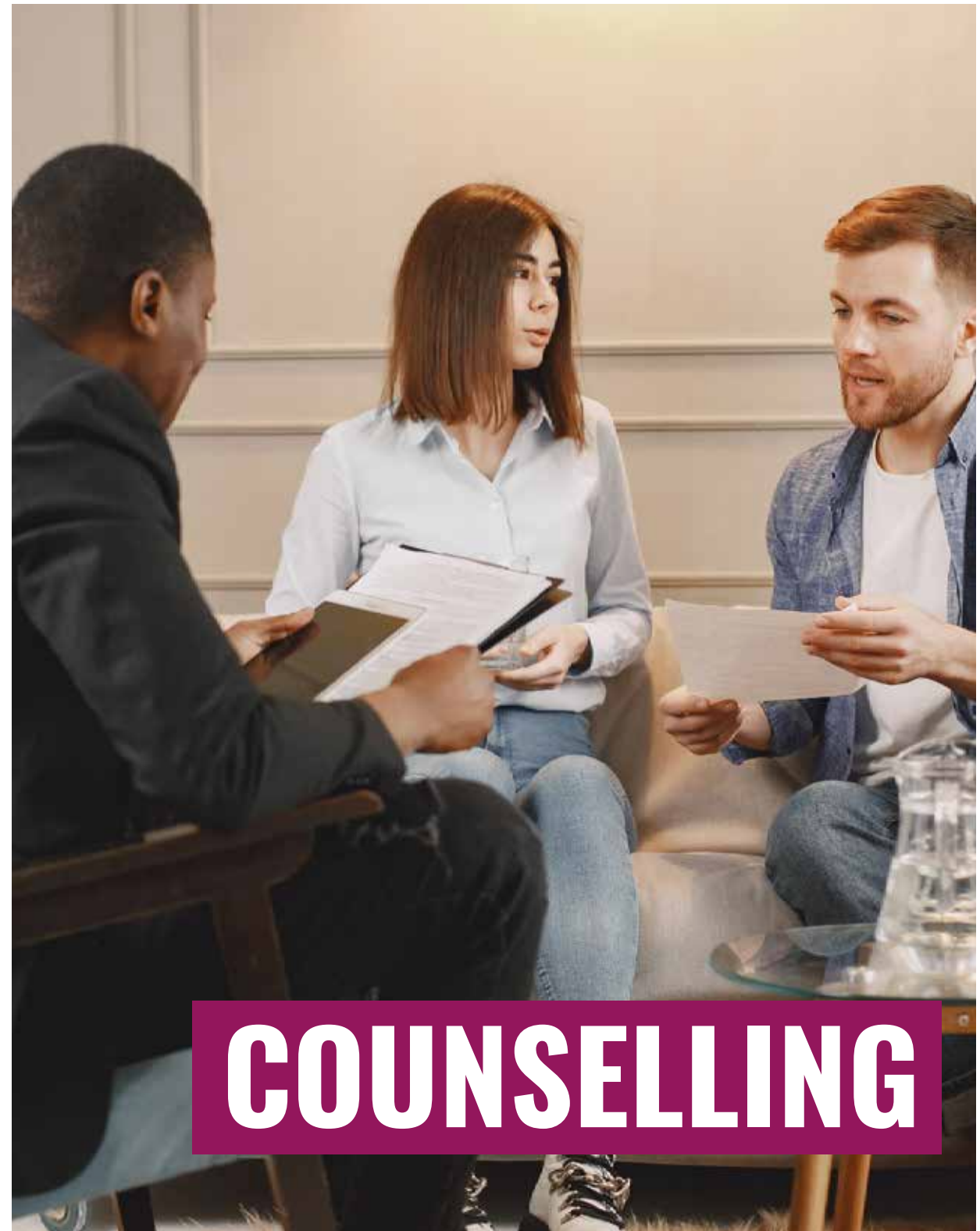
- The early childhood professional
- Contemporary issues in the early years
- Principles and pedagogy in early childhood
- International perspectives in early childhood

“

The college gave me so much support, understanding and encouragement. My learning experience was amazing. I would highly recommend this course to anyone looking to enhance their development.

”

Sean Lavery is now an Addiction Counsellor.



Therapeutic Counselling Diploma (Level 4)

Develop listening skills and self-awareness that will enhance your current job whilst equipping you with the vocational skills and competency required to work as a counsellor.



CAREER STATISTICS

Take a look at industry statistics for the local area:



2021/22 Jobs

6,634



Average Annual Salary

£26.8k

Source: EMSI 2022

Entry Requirements:

- GCSE maths and English (A*/9 to C/4)
- A CSK level 2 or equivalent
- A CST level 3 or equivalent

Course Code

J011

Course Duration

3 Years

Timetable

Wed
10.00-17.00

College Campus

Twelve Quays

Fee

If you are aged 19 or over, the fee for this course will be £8,340 per year (correct as of 09/2022)



Awarded by Counselling and Psychotherapy Central Awarding Body (CPCAB)

Course Details:

This professional qualification gives students the knowledge, skills and competencies to work as a Therapeutic Counsellor in an agency context in both healthcare and non-medical settings. Core modules include:

- Work ethically, safely and professional as a counsellor
- Counselling relationships
- Client diversity in counselling work
- The user-centred approach to counselling
- Self awareness in the counselling process
- The coherent framework of counselling theory and skills
- Working self reflectively as a counsellor

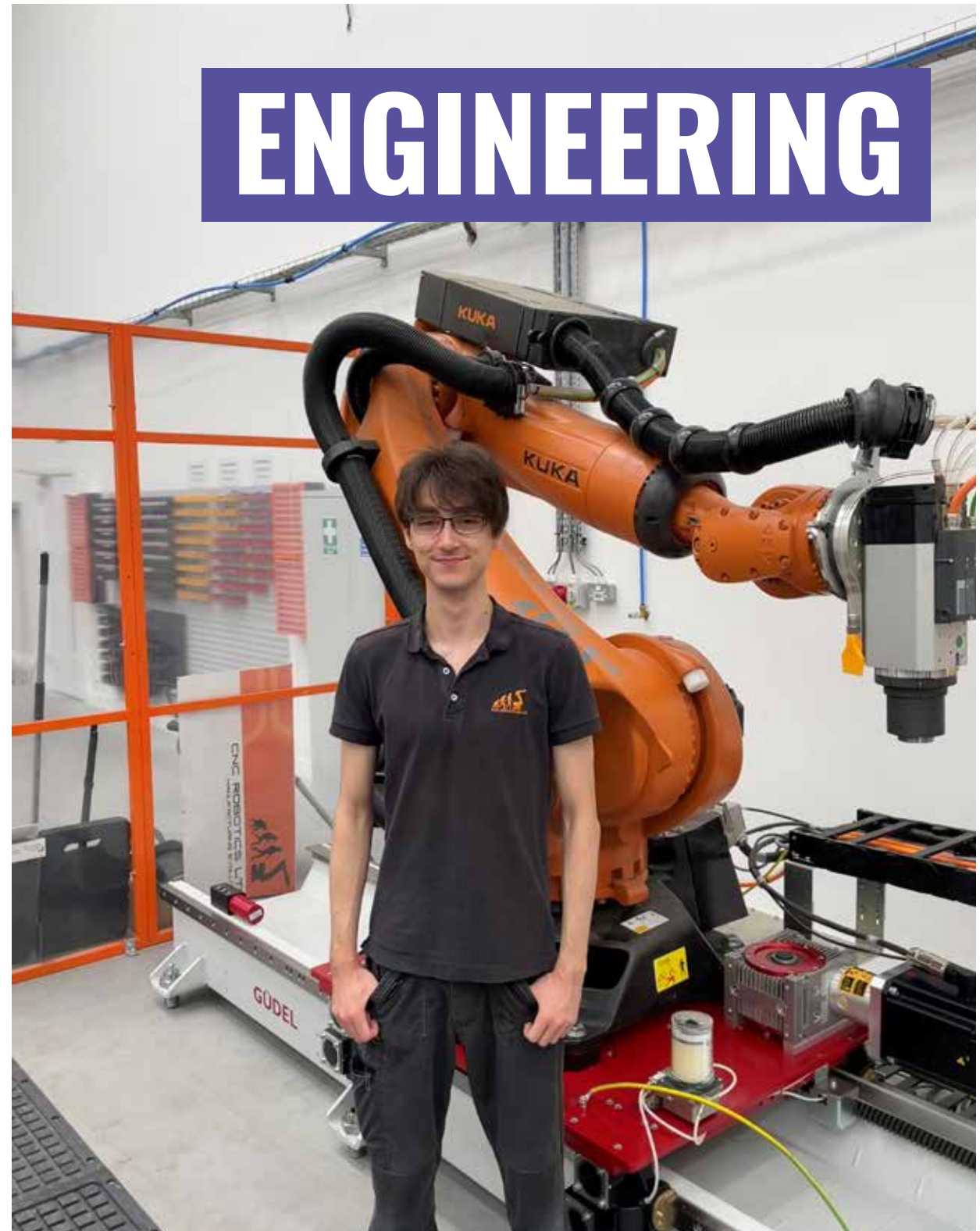
“

The engineering knowledge and work experience I gained at Wirral Met provided me with a good foundation for my future. The college also encouraged me to apply for my degree apprenticeship which has led me to where I am today.

”

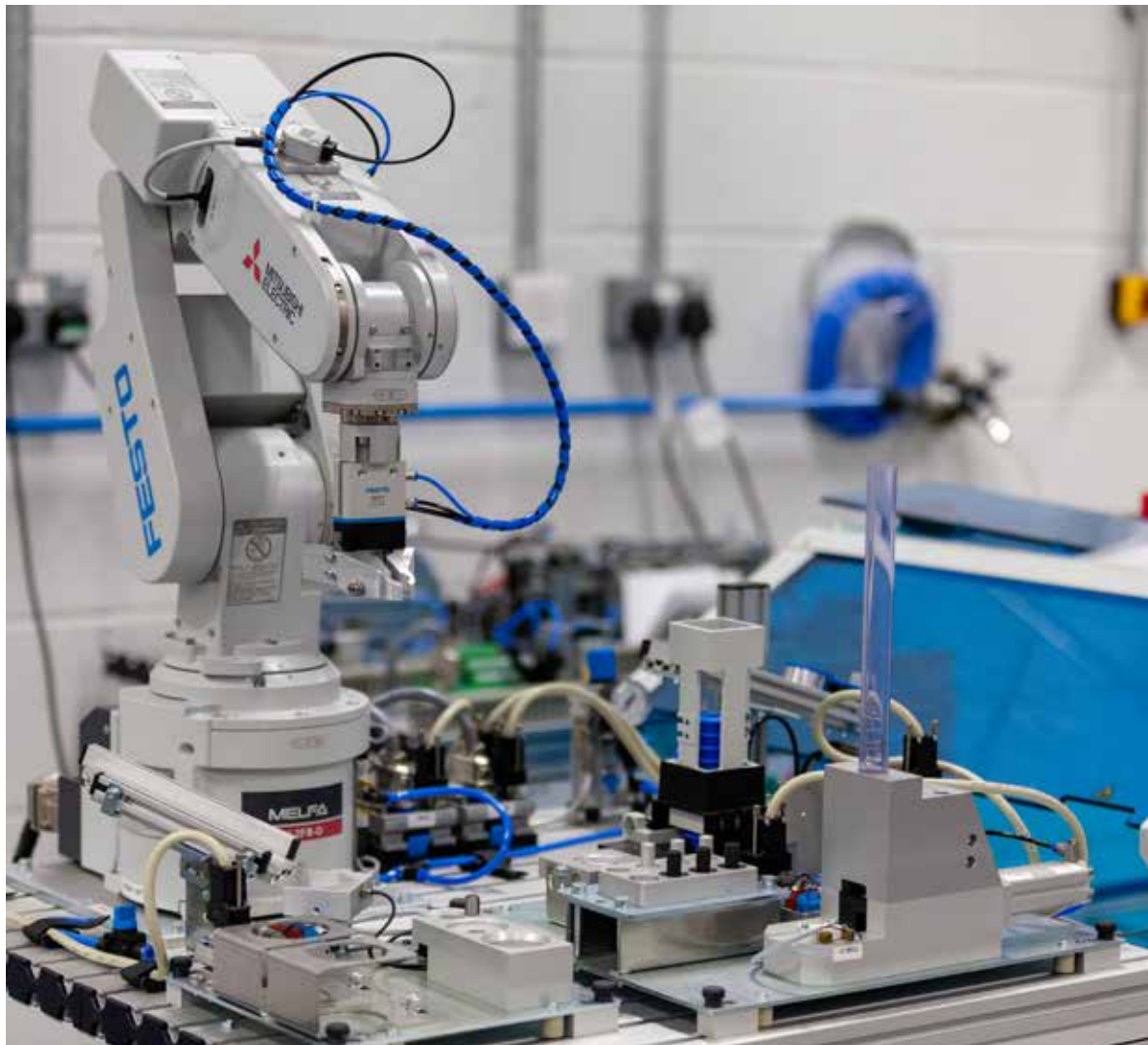
Brandon Waters works full-time as an Engineer at CNC Robotics, alongside studying a Degree Apprenticeship in Mechatronics and Intelligent Machines.

ENGINEERING



Higher National Certificate (HNC) in General Engineering

Our friendly experienced tutors will help you gain new technical knowledge and soft skills such as team leading, report writing, project management and presentation skills. Access to the latest technology and specialist engineering equipment will help you succeed.



Entry Requirements:

- GCSE maths and English (A*/9 to C/4)
- You should have a level 3 qualification such as:
 - BTEC level 3 engineering
 - A relevant A level (A*-C)
 - A relevant Access to HE certificate in a relevant subject

Course Code

E154

Course Duration

2 Years (Part-time)

Timetable

Tue
9.00-16.00

College Campus

Twelve Quays

Fee

If you are aged 19 or over, the fee for this course will be £3,270 per year (correct as of 09/2022)



Course Details:

This qualification offers students a broad introduction to the study of both Mechanical and Electrical and Electronics theories and applications. You will get the opportunity to study the following modules:

- Engineering design
- Engineering maths
- Engineering science
- Managing a professional engineering project

Students will also undertake two specialist units and optional units, for example Mechanical Principles, Fundamentals of Thermodynamics and Heat Engines, Renewable Energy, Mechatronics, CAD and Electronic Circuits and Devices.

“

This was hands down the best decision I have ever made, it has given me a new lease of life and a purpose. I have got so much support from peers and staff.

”

Refusing to give up on her dreams of university, Jessica Williams completed an Access to Higher Education course before progressing on to the BSc (Hons) Psychology degree at Wirral Met.



BSc (Hons) Psychology (2+2)

Gain new skills in academic psychology through a multi-disciplinary and integrated approach designed to prepare you to progress onto the second year of BSc (Hons) course at the University of Liverpool.



Entry Requirements:

As this course incorporates a foundation year, formal qualifications such as A levels or Access to HE, are not required.

- Demonstration of literacy and numeracy skills
- Motivation
- Evidence of research into the content of the course

UCAS Code

C081

Course Code

J007

Course Duration

2 years, followed by 2 years at the University of Liverpool

Timetable

Mon & Tue
09.00 - 16.00,
Wed
09.00 - 13.00

College Campus

Hamilton

Fee

If you are aged 19 or over, the fee for this course will be £8,340 per year (correct as of 09/2022)



UNIVERSITY OF
LIVERPOOL

Awarded by the
University of Liverpool

Course Details:

The 2 + 2 BSc (Hons) Degree in Psychology involves two years full time attendance at Wirral Met College followed by a final two years at the University of Liverpool. You will be introduced to academic psychology through a multi-disciplinary and integrated approach which will prepare you to progress into the second year of the BSc (Hons) Psychology course at the University of Liverpool.

CAREER STATISTICS

Take a look at industry statistics for the local area:



2021/22 Jobs

547



Average Annual Salary

£38.9k

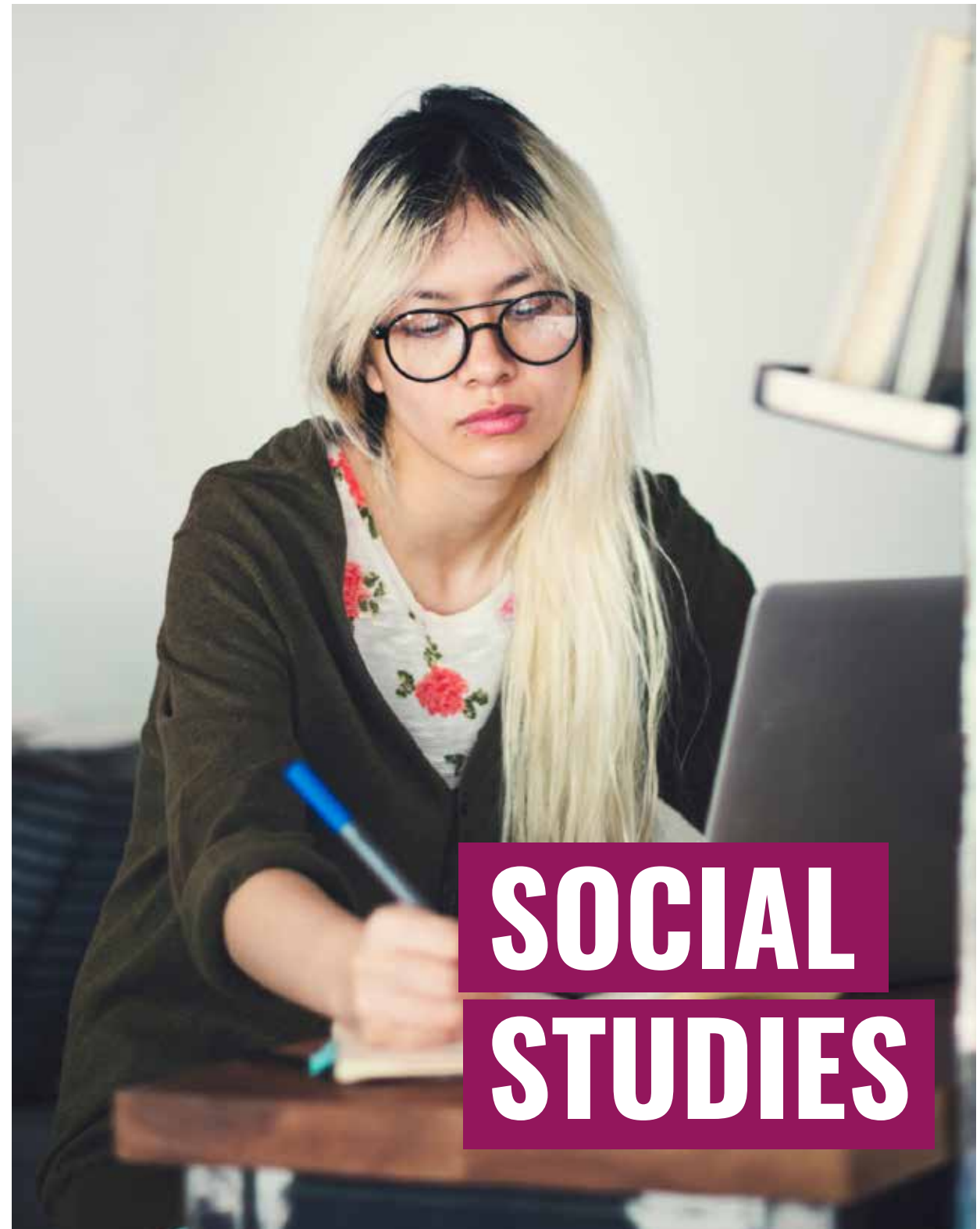
Source: EMSI 2022

“

I am thankful to Wirral Met which gave me the opportunity to pursue my dream to study Sociology and Criminology.

”

Carola Bianco started her journey at Wirral Met on an English for Speakers for Other Languages course. In 2022, she graduated with a first-class honours degree in Sociology and Criminology.



**SOCIAL
STUDIES**

Full-time (BA) (Hons) Sociology with Criminology

If you are interested in developing a critical understanding of crime in society in relation to the broader social contexts, then this is the degree for you. Explore the complexities of life whilst developing skills and knowledge through a diverse range of topics within sociology and criminology including:

- Sociological imagination
- Theories of crime and justice
- Crime and criminology
- Social change and social movements
- Sex, sexuality and society
- Terrorism: content, threat and response



Entry Requirements:

- GCSE maths and English (A*/9 to C/4)
- A minimum of 104 UCAS tariff points made up of any of the following:
 - BTEC National Diploma/ Certificate
 - Irish/Scottish Highers
 - QAA recognised Access to HE Diploma, to include 45 credits at level 3
 - OCR National Extended Diploma (18 units)

Don't have the UCAS points? If you can demonstrate the motivation and qualities to study at degree level you can still apply! You will need to provide a reference and complete a comprehension task during interview.

UCAS Code L010

Course Code Z060

Course Duration 3 years

Timetable Thu 09.00 - 15.30,
Fri 09.00 - 14.30

College Campus Hamilton

Fee If you are aged 19 or over, the fee for this course will be £8,340 per year (correct as of 09/2022)



University of
Chester Awarded by the
University of Chester

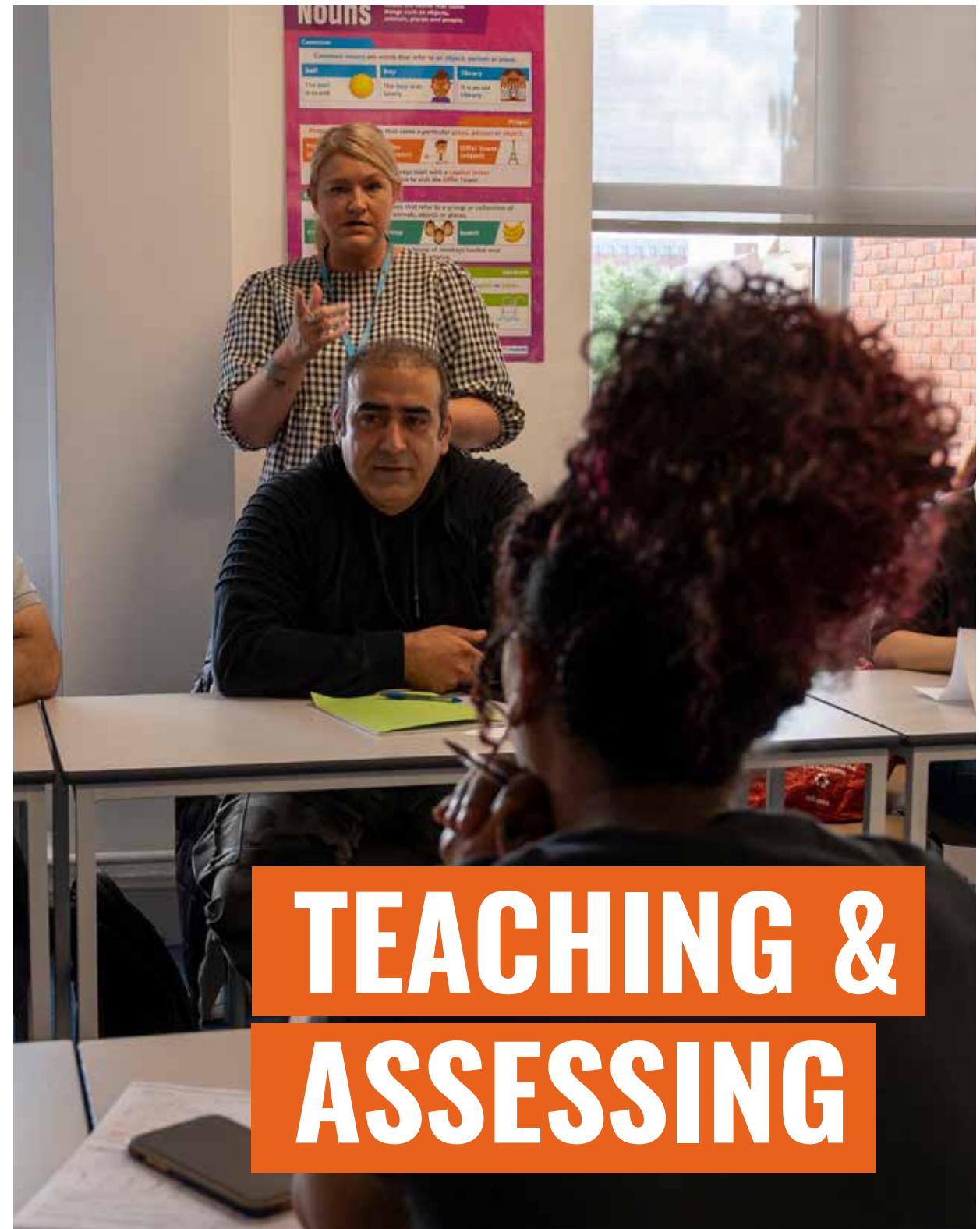


“

I learnt so much at Wirral Met, the course has given me so many life opportunities. I'm forever grateful for the support I received, which gave me the confidence to apply for the PGCE.

”

Since completing the course, Lori has worked for international education company, Education First and at Brighton University.



**TEACHING &
ASSESSING**

Certificate in Education

Careers in teaching are highly rewarding, and inspirational teaching can make a real difference to the lives of students. Our professional qualifications will prepare you for teaching in the post-16 education and training sector.



CAREER STATISTICS

Take a look at industry statistics for the local area:



2021/22 Jobs
28,179



Average Annual Salary
£35.7k

Source: EMSI 2022

Entry Requirements:

- 5 GCSEs (A*/9 to C/4) or equivalent, to include English
- Level 3 qualification in teaching subject specialism
- Evidence of Disclosure and Barring Service (DBS)
- You must also have the ability to communicate fluently, accurately and effectively in professional spoken English.

Awarded by the University of Central Lancashire



Full-time Certificate in Education (Education and Training)

Course Code	B107
Course Duration	1 Year
Timetable	Thu & Fri 9.00-16.00
College Campus	Hamilton
Fee	If you are aged 19 or over, the fee for this course will be £7,790 per year (correct as of 09/2022)

Part-time Certificate in Education (Education and Training)

Course Code	B109
Course Duration	2 Years
Timetable	Thu 17.30-21.00
College Campus	Hamilton
Fee	If you are aged 19 or over, the fee for this course will be £3,895 per year (correct as of 09/2022)

Head to page 24 to find out about the Further Education Teacher Training Funding available!

Postgraduate Certificate in Education

If you want to develop a career in the teaching profession and gain skills to teach at all levels, this course will enable you to design curriculum, assessments and learn about contemporary issues in education and training.

Entry Requirements:

- 5 GCSEs (A*/9 to C/4) or equivalent, to include English and maths
- Level 3 qualification in teaching subject specialism
- A BA (Hons) degree
- Evidence of Disclosure and Barring Service (DBS)
- A teaching or training placement for a minimum of 150 hours of teaching over the course of the placement - under exceptional circumstances a voluntary teaching placement may be acceptable
- You must also have the ability to communicate fluently, accurately and effectively in professional spoken English



Awarded by the University of Central Lancashire

Full-time Postgraduate Certificate in Education (PGCE)

COURSE CODE	COURSE DURATION	TIMETABLE	COLLEGE CAMPUS	FEE
B108	1 year	Thu & Fri 09.00 - 16.00	Hamilton	If you are aged 19 or over, the fee for this course will be £8,340 per year (correct as of 09/2022)

Postgraduate Certificate in Education (PGCE)

COURSE CODE	COURSE DURATION	TIMETABLE	COLLEGE CAMPUS	FEE
B110	2 years	Thu 16.30 - 21.00	Hamilton	If you are aged 19 or over, the fee for this course will be £4,170 per year (correct as of 09/2022)

CELTA (Certificate in English Language Teaching to Adults) (level 5)

CELTA is a qualification for teaching English as a foreign language. It is the most widely recognised English teaching qualification in the world, and the most often requested by employers. This is the perfect course if you wish to teach in the UK or overseas.



Entry Requirements:

- You must be over 20 years of age and hold the following qualifications:
- GCSE maths and English (A*/9 to C/4)
- A level standard or equivalent
- Demonstrate sufficient levels of written and spoken English
- Demonstrate the potential to become a language teacher

Course Code

X066

Course Duration

18 weeks

Timetable

Thu
09.00-17.00

College Campus

Conway Park

Fee

The fee for this course will be £1,250 (correct as of 09/2022).



Awarded by the University of Cambridge

HIGHER APPRENTICESHIPS

Apprenticeships are for people of any age. Our higher apprenticeships offer an excellent alternative to university, by offering practical industry training combined with teaching from our specialist tutors.

A higher education apprenticeship is a partnership between the apprentice, their employer and Wirral Met College.

What are the benefits?

- + Gain a head start in your chosen career
- + Earn whilst you learn at college
- + Gain industry relevant qualifications
- + No tuition fees to pay or university debts

At Wirral Met, we offer higher apprenticeships at levels 4 to 5:

APPRENTICESHIP	LEVEL	START DATE	DURATION
Associate Project Manager	4	January	24 months
Operations/Department Manager	5	Quarterly-rolling	30 months
Healthcare Science Associate	4	May	24 months
Technician Scientist	5	January & September	36 months
HR Consultant Partner	5	September	18 months
Professional Accounting / Taxation Technician	4	January & September	18 months
Sports Coach	4	Rolling	18 months

You can find out more online at wmc.ac.uk/apprenticeships or call us on **0151 551 7777**.



OCCUPATIONAL TRAINEESHIPS



Occupational traineeships are short, flexible, education programmes designed for 16-24 year olds who are interested in securing an apprenticeship or employment.

Typically, a traineeship includes four weeks in college and eight weeks with an employer on a high quality work placement, but can last up to 12 months if needed.

Traineeships are a brilliant way to gain experience and confidence, helping you to take the next step into an apprenticeship, work or further study.

At Wirral Met we are proud of our strong employer links and comprehensive vocational offer.

You must be:

- Aged 16-24 (or up to 25 with an EHCP)
- Living in England
- Not in education or employment

AM Group were so happy with Tom's positive attitude, reliability and great work ethic that within four weeks of the traineeship they were talking about taking him on. Tom is now an apprentice engineer.

Find out more at wmc.ac.uk/traineeships.



GET

UNIVERSITY

READY.

**WITH OUR PRE-ACCESS
COURSES AND ACCESS TO
THE COURSES**

PRE-ACCESS TO HIGHER EDUCATION (HE) COURSES

Start your journey to HE with a Pre Access Course

If you are returning to study after a break in your education, these one year courses are designed to increase your knowledge and confidence. They offer a progression route to an Access to Higher Education course or to other Level 3 courses.

If you have not already achieved a grade 9-4 (A*-C) you will also be supported to study maths and English GCSE alongside your level two course.

Our Pre-Access courses will ensure you feel confident, progressing into your Access programme and then onto higher education.



Pre Access Courses for 2023:

CODE	COURSE TITLE	START DATE	WHAT ACCESS COURSE DOES THIS LEAD TO?
Y022	Humanities and Social Science	September 2023	<ul style="list-style-type: none"> • Access to Humanities and Social Studies • Access to Psychology and Mental Health • Access to Sociology and Criminology
J049	Medical Health and Science Professions	September 2023	<ul style="list-style-type: none"> • Access to Biomedical Science • Access to Midwifery and Professions Allied to Medicine • Access to Nursing and Allied Health Professions
J085	Health and Social Care	January 2023 April 2023 September 2023	<ul style="list-style-type: none"> • Access to Nursing and Allied Health Professions • Access to Midwifery and Professions Allied to Medicine.

You may be eligible to study on one of our Pre-Access to Higher Education courses for **FREE** if you are:

- a resident of the Liverpool City Region
- unemployed and in receipt of a state benefit
- if you live outside of the Liverpool City Region and earn less than £18,525 per year.

Please visit wmc.ac.uk/funding or call **0151 551 7777** for more information.

Fee: £600 (correct as of 09/2022).



“ I strongly believe I could not have accomplished all I have without the help and support from my tutors at Wirral Met. ”

Alumnus Nathalie Rutter completed the Access to Allied Health Professions course in 2020. She is currently a Student Nurse Paramedic, with ambitions to work in the North West Ambulance Service once fully qualified.

ACCESS TO HIGHER EDUCATION (HE) COURSES

Not ready for a university level qualification, or don't quite meet the entry requirements? Our Access to Higher Education courses have been designed for individuals who may not have achieved qualifications at school and want to boost their opportunities.

These QAA accredited courses provide those aged 19 and over with an essential qualification, subject specific knowledge and the skills to progress directly to university.

Our one year Access to Higher Education courses require a commitment of **2 days per week**.

CODE	COURSE TITLE	START DATE
S152	Biomedical Science	September
Y052	Computing and Digital Technology	September
Y001	English and Sociology	September
J145	Midwifery and Professions Allied to Medicine	September
J004	Nursing and Allied Health Professions	September
Y051	Pharmacy and Pharmaceutical Sciences	September
Y039	Psychology and Mental Health	September
Y038	Sociology and Criminology	September



Fee: £3,384 (correct as of 09/2022).

You may be eligible to study on one of our Access to Higher Education courses for **FREE**. Please visit wmc.ac.uk/funding or call **0151 551 7777** to find out if you are eligible.

HOW TO FIND US



We are easily accessible from all parts of Wirral, Merseyside and Cheshire with great links to public transport and parking close to all of our campuses. Most of our campuses are also within walking distance from each other so you can easily use the facilities best for you.



There are several bus routes which serve students of the college, many stop right outside of our campuses!

For timetables and prices visit merseytravel.gov.uk



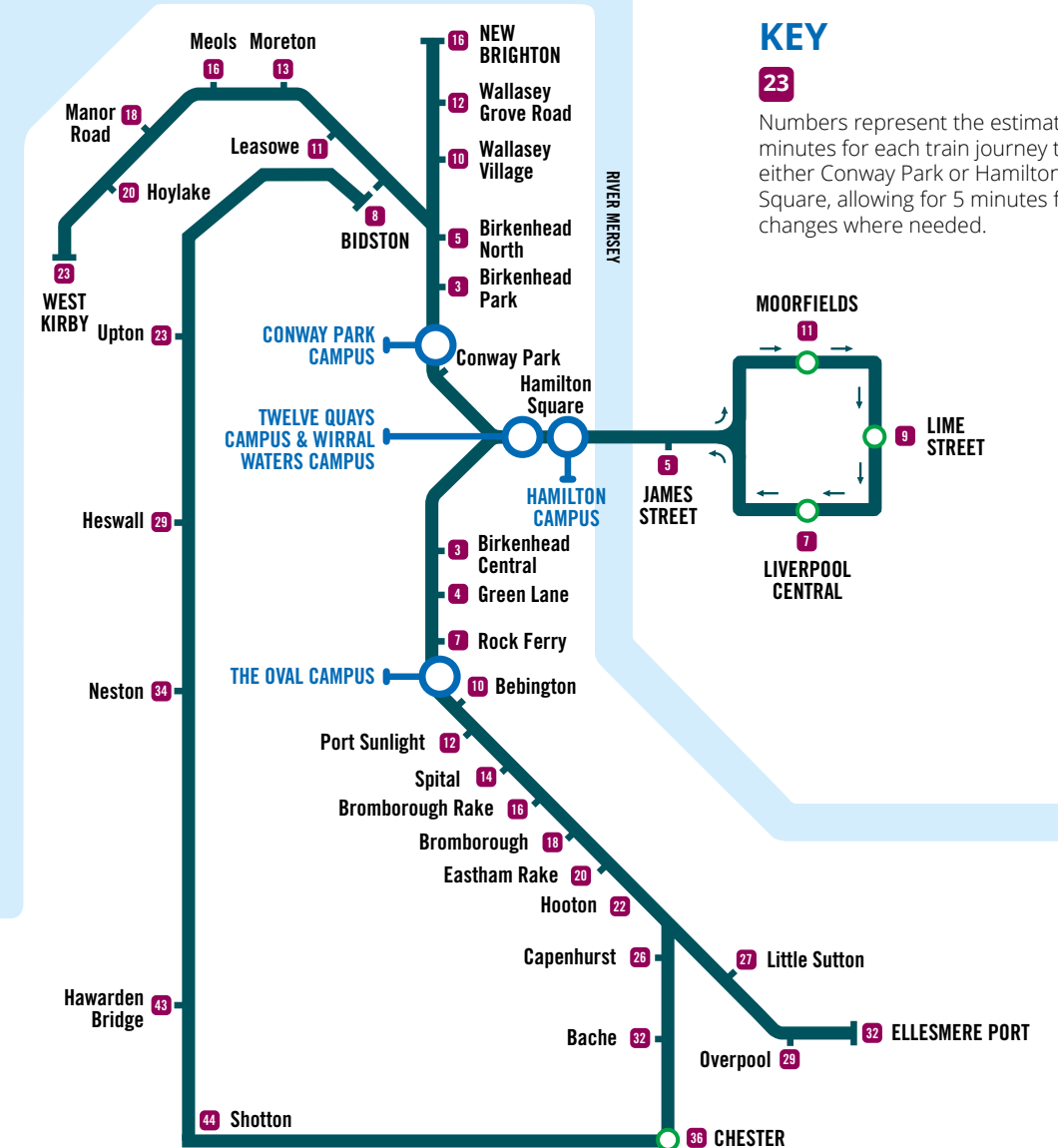
Our campuses are conveniently located just a five minute walk from our local train stations, Conway Park, Hamilton Square and Bebington.

For timetables and prices visit merseyrail.org



There are numerous car parks available around the campuses (free and paid) that you can use whilst studying with us.

TRAVELLING TO COLLEGE



CONNECT WITH US

Whether you are continuing your studies, changing careers or returning to education later in life, we are here to help you succeed.

You will find a welcoming learning environment at Wirral Met, with world-class facilities, outstanding student support and excellent employer links for your career prospects.

We recognise that returning to education as an adult student, or simply deciding which pathway to take, is a life-changing decision. We will support you every step of the way from enquiry to application.



Call us on **0151 551 7777**



Pop in to one of our Student Adviser drop-in sessions. Head to our Conway Park campus every week day from 10am to 4 pm, and until 6pm on Wednesdays (term time only). No appointment necessary.



@WirralMet



@WirralMetCollege



@WirralMet



[youtube.com/WirralMetwmc](https://www.youtube.com/WirralMetwmc)

Disclaimer Please Note: All information contained within this course guide is correct at the time of going to press. However, some details, **including fees**, may change as we review and update our provision. Visit [wmc.ac.uk](https://www.wmc.ac.uk) for the latest information.

Although every effort is made to provide all the teaching, examination, assessment and other services detailed in this publication, Wirral Met College cannot guarantee the provision of such programmes, services, facilities and fees. Wirral Met College reserves the right to amend, withdraw, alter or amalgamate any of the courses, locations and facilities detailed within at any time. Should circumstances require such amendments, Wirral Met College undertakes to use all reasonable steps to minimise the resultant disruption to those services and most importantly to students. Career statistics included within this prospectus were sourced from EMSI in September 2021. Date of Publication: Sept 2022.





Wirral Met College

0151 551 7777 | wmc.ac.uk/HE |     

QAA Reviewed
Quality Assurance Agency
for Higher Education

