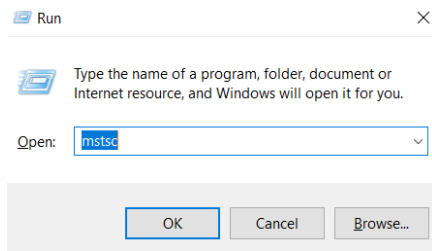


## Accessing the college network using remote access using Windows 7/8/10

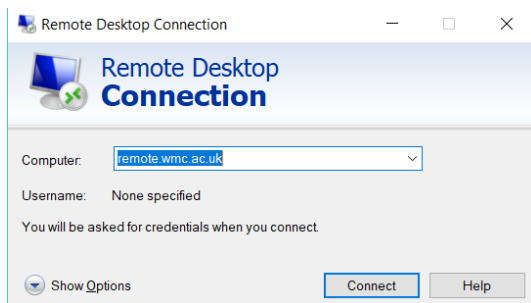
Press the Windows key (looks like a little Windows symbol) + R

In the Run box type MSTSC and press enter.

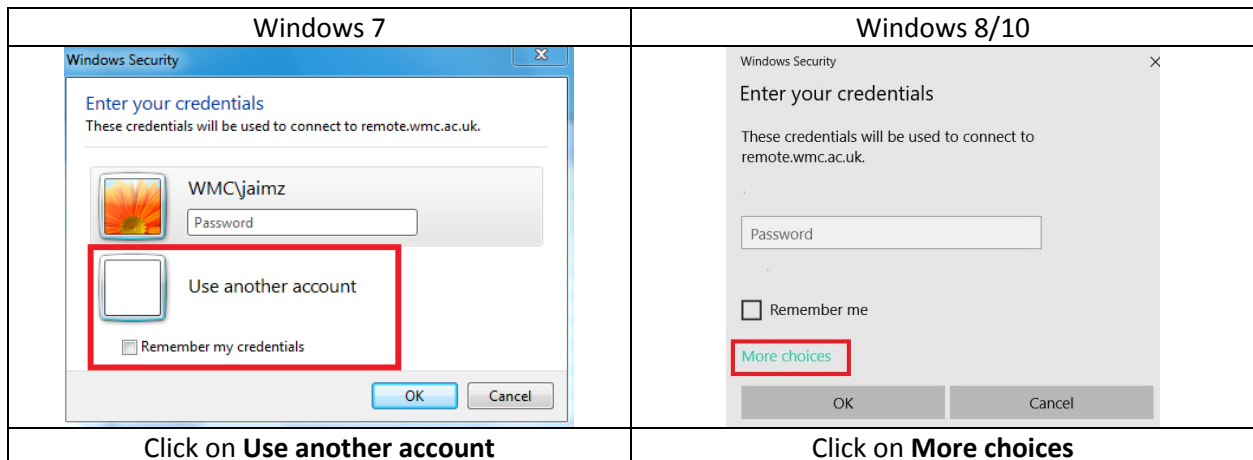


This brings up the Remote Desktop Connection box.


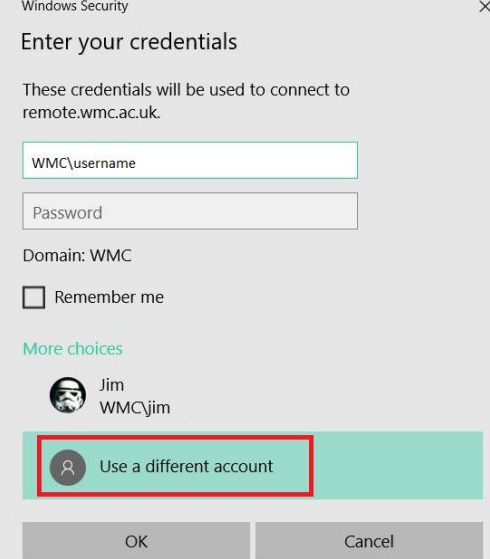
Enter REMOTE.WMC.AC.UK and click on Connect



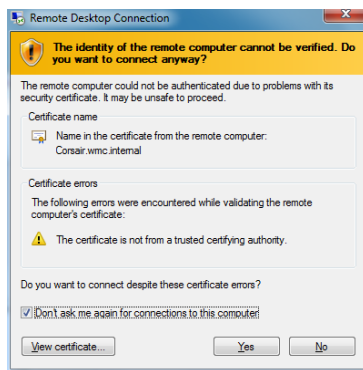
You'll get one of the following boxes depending on which version of Windows you are using.



## Accessing the college network using remote access using Windows 7/8/10

	
<p>Enter your college username and password. Precede your username with WMC\. Tick the <b>Remember my credentials</b> box.</p>	<p>Click on Use a different account. At the top of the box enter your college username and password. Precede your username with WMC\. Tick the <b>Remember me</b> box.</p>
<p>Click on <b>OK</b> to continue.</p>	

Tick the **Don't ask me again for connections to this computer** box and click **Yes** to accept the certificate.



You should now be connected to the college through remote access. Login as you normally would.

